

ALL PRODUCT DIMENSIONS ARE BEFORE COATING

REFERENCE DRAWING ONLY - NOT TO BE USED FOR INSPECTION PURPOSES

DO NOT SCALE

MATERIAL SPECIFICATION

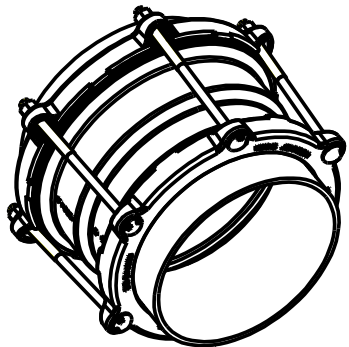
CENTRE SLEEVE (Part 1)
Ductile Iron to BS EN1563:1997
SYMBOL EN-GJS-450-10
END RINGS (Parts 2 & 4)
Ductile Iron to BS EN1563:1997
SYMBOL EN-GJS-450-10
GASKETS (Parts 3 & 5)
EPDM to BS EN 681-1, TYPE WA, WC
NITRILE to BS EN 681-1, TYPE WA, WC, WG
or BS EN 682, TYPE G
BOLTS (Part 6)
Steel to BS EN ISO 898-1:1999
Property Class 4.8
NUTS (Part 7)
Steel to
BS4190:2001 Grade 4
WASHERS (Part 8)
Stainless Steel to BS1449:Part 2:1983
Grade 304S15

FINISH SPECIFICATION

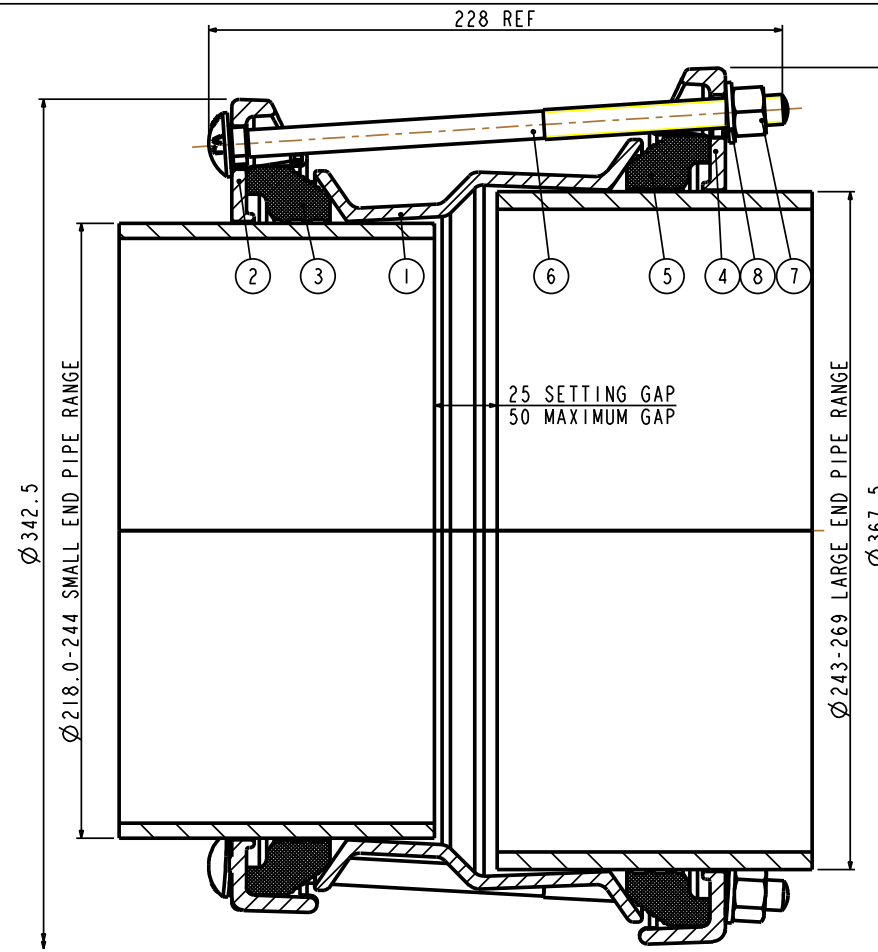
NOTES

BOLT TORQUE

55-65Nm



ISOMETRIC VIEW



PIPE RANGES				GASKET MOULDS		BOLTS	WORKING PRESSURE	TEST PRESSURE	WEIGHT KG	ASSEMBLY DRG NO
SMALL END	LARGE END	SMALL END	LARGE END							
218	244	243	269	12392-10	12392-11	6-M12x220	16bar	24bar	12.239	12395-9

OVERALL DIMENSIONS DRAWING
FOR REFERENCE ONLY
VIKING JOHNSON RESERVE THE
RIGHT TO AMEND DETAILS WITHOUT
PRIOR NOTIFICATION

This drawing is the exclusive property of VIKING JOHNSON and is confidential and must not be reproduced or disclosed to a third party without written consent. It must be used only for the purpose which it has been issued and is returnable on request.

CRANE A Crane Co Company

OVERALL DIMENSIONS OF
MAXIFIT
STEPPED COUPLINGS
FOR 218-244 TO 243-269mm O.D. PIPE RANGES

RELEASE LEVEL: Manufacture

SHEET 1 OF 1



DRAWN	P.N.	SCALE	1:000
DATE	31-Jan-07	GENERIC	O_DIM_12395_9_1

DRG NO O_DIM_12395_9_1