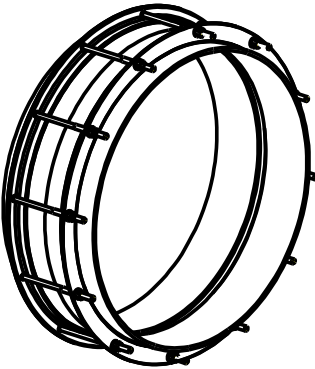
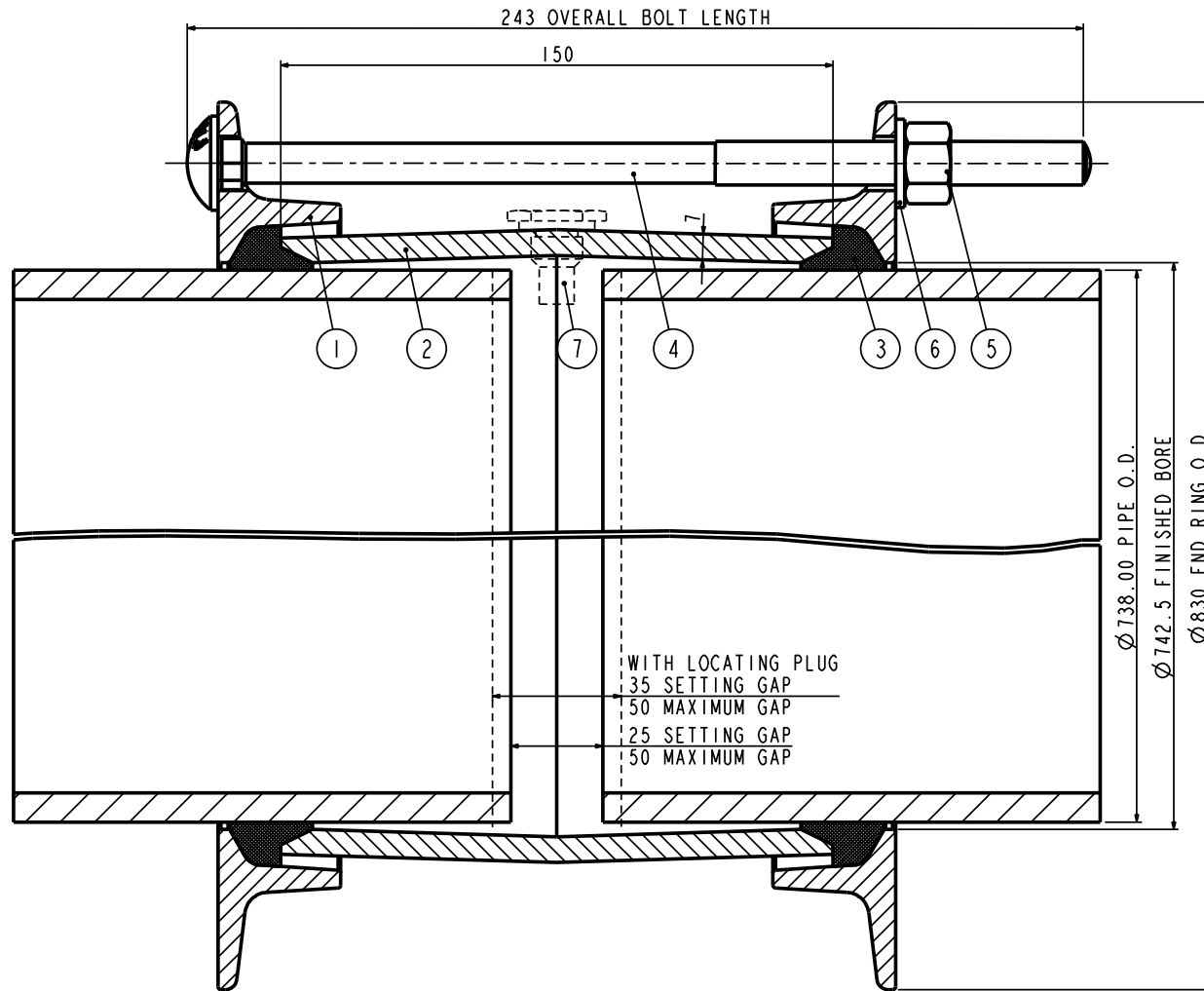


# ALL PRODUCT DIMENSIONS ARE BEFORE COATING

REFERENCE DRAWING ONLY - NOT TO BE USED FOR INSPECTION PURPOSES

DO NOT SCALE

MATERIAL SPECIFICATION
<b>END RING (Part 1)</b> STEEL to BS EN10025-2:2004 GRADE S275JR <b>CENTRE SLEEVE (Part 2)</b> STEEL to BS EN10025-2:2004 GRADE S275JR <b>GASKET (Part 3)</b> RUBBER 80 HARDNESS Grade to suit service <b>BOLTS (Part 4)</b> STEEL BS EN ISO898-1:2009 PROPERTY CLASS 4.8 <b>NUTS (Part 5)</b> STEEL BS4190:2001 GRADE 4 <b>WASHERS (Part 6)</b> STAINLESS STEEL BS1449:PART 2:1983 GRADE 304S15 <b>LOCATING PLUGS (Part 7)</b> STEEL BS970:PART 3:1991 GRADE 230M07
FINISH SPECIFICATION
NOTES
Locating Plugs/Pin Register. If Locating Plugs/Pins are required, 3 Plugs/Pins are to be supplied.
BOLT TORQUE
Torque to 54-65Nm or 40-50 lbf ft

ISOMETRIC VIEW



PIPE O.D.	PIPE MATERIAL	PIPE TOLERANCE		BOLTS NO-SIZE	GASKET MOULD	WORKING PRESSURE	TEST PRESSURE	WEIGHT KG	ASSEMBLY DRG NO
		+	-						
738.00	DUCTILE IRON	3.40	4.50	12-M12x235	J63LS	21.7bar	32.6bar	39.3	7829_378

OVERALL DIMENSIONS DRAWING FOR REFERENCE ONLY  
 VIKING JOHNSON RESERVE THE RIGHT TO AMEND DETAILS WITHOUT PRIOR NOTIFICATION

This drawing is the exclusive property of VIKING JOHNSON and is confidential and must not be reproduced or disclosed to a third party without written consent. It must be used only for the purpose which it has been issued and is returnable on request.

CRANE A Crane Co Company



OVERALL DIMENSIONS OF  
 VIKING JOHNSON COUPLING ASSEMBLY  
 'LO2' SECTION  
 FOR 738.00mm O.D. PIPE

RELEASE LEVEL: Manufacture

SHEET 1 OF 1



DRAWN	AUTO	SCALE	N.T.S.
DATE	21/12/10	GENERIC	7829

DRG NO SKP42-1