

ALL PRODUCT DIMENSIONS ARE BEFORE COATING

REFERENCE DRAWING ONLY - NOT TO BE USED FOR INSPECTION PURPOSES

DO NOT SCALE

MATERIAL SPECIFICATION

END RING (Part 1)
 STEEL to
 BS EN10025-2 GRADE S275JR
CENTRE SLEEVE (Part 2)
 STEEL to
 BS EN10025-2 GRADE S275JR
GASKET (Part 3)
 RUBBER 80 HARDNESS
 Grade to suit service
BOLTS (Part 4)
 STEEL BS EN ISO898-1
 PROPERTY CLASS 4.8
NUTS (Part 5)
 STEEL BS4190
 GRADE 4
WASHERS (Part 6)
 STAINLESS STEEL BS1449:PART 2
 GRADE 304S15
LOCATING PLUGS (Part 7)
 STEEL BS970:PART 3
 GRADE 230M07

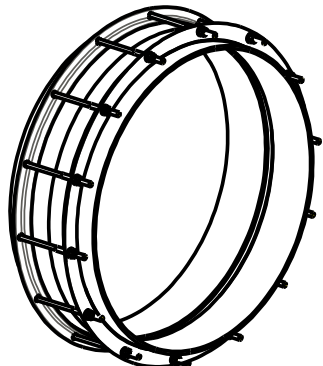
FINISH SPECIFICATION

NOTES

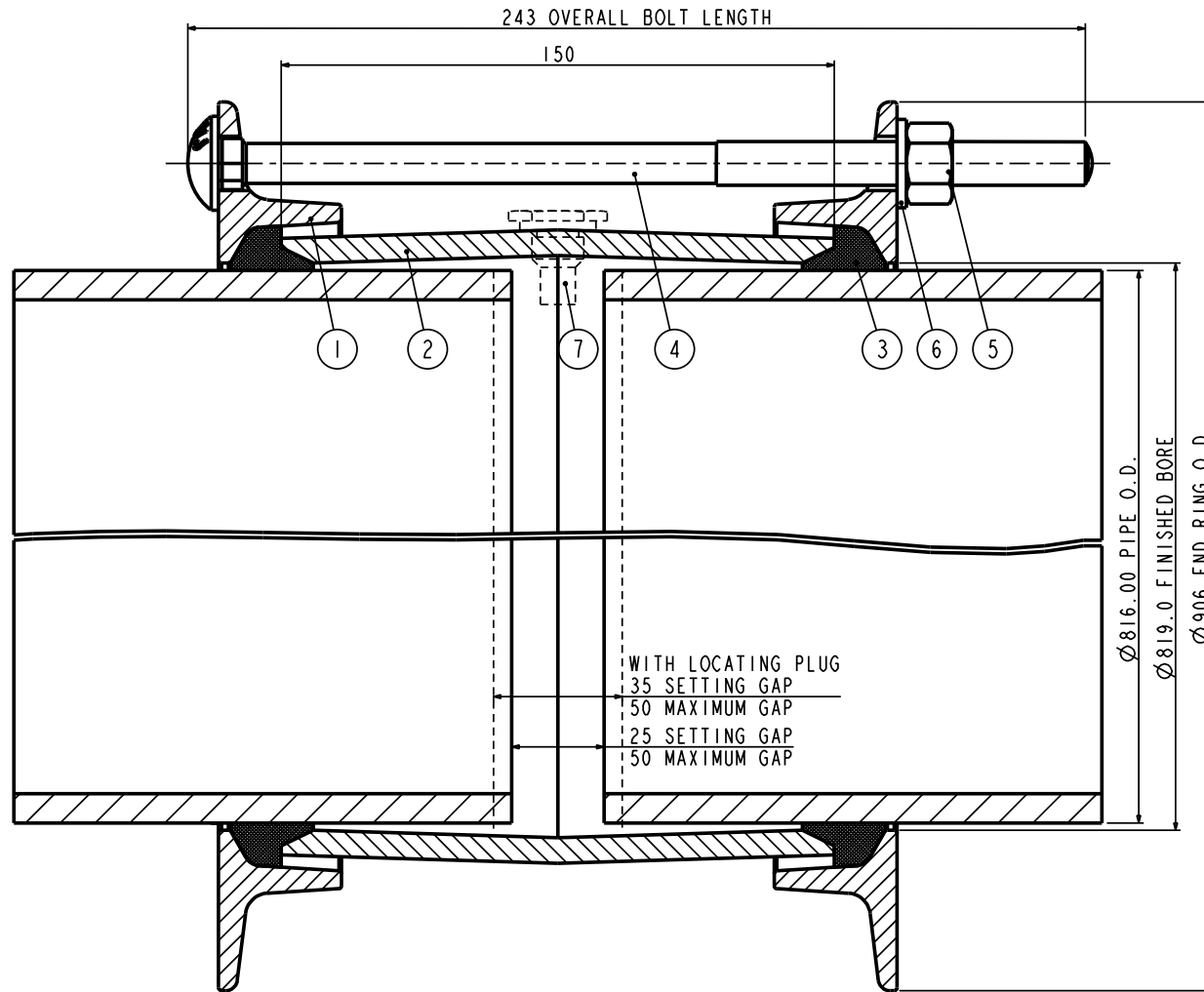
Locating Plugs/Pin Register.
 If Locating Plugs/Pins are required,
 3 Plugs/Pins are to be supplied.

BOLT TORQUE

Torque to 55-65Nm



ISOMETRIC VIEW



Pipe O.D. includes a Coating of 1.50mm thick. Un-Coated Pipe is 813.00mm O.D.

PIPE O.D.	PIPE MATERIAL	PIPE TOLERANCE		BOLTS NO-SIZE	GASKET MOULD	WORKING PRESSURE	TEST PRESSURE	WEIGHT KG	ASSEMBLY DRG NO
		+	-						
816.00	STEEL	1.60	1.60	14-M12x235	J65LS	19.7bar	29.6bar	43.4	7829_401

OVERALL DIMENSIONS DRAWING
 FOR REFERENCE ONLY
 VIKING JOHNSON RESERVE THE
 RIGHT TO AMEND DETAILS WITHOUT
 PRIOR NOTIFICATION

This drawing is the exclusive property of VIKING JOHNSON and is confidential and must not be reproduced or disclosed in a third party without written consent. It must be used only for the purpose which it has been issued and is returnable on request.

CRANE A Crane Co Company

OVERALL DIMENSIONS OF
 VIKING JOHNSON COUPLING ASSEMBLY
 'L02' SECTION
 FOR 816.00mm O.D. PIPE



DRAWN	AUTO	SCALE	N.T.S.
DATE	28/06/16	GENERIC	7829

DRG NO SKP1996-1

RELEASE LEVEL: Manufacture

SHEET 1 OF 1