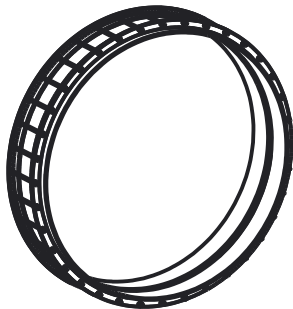
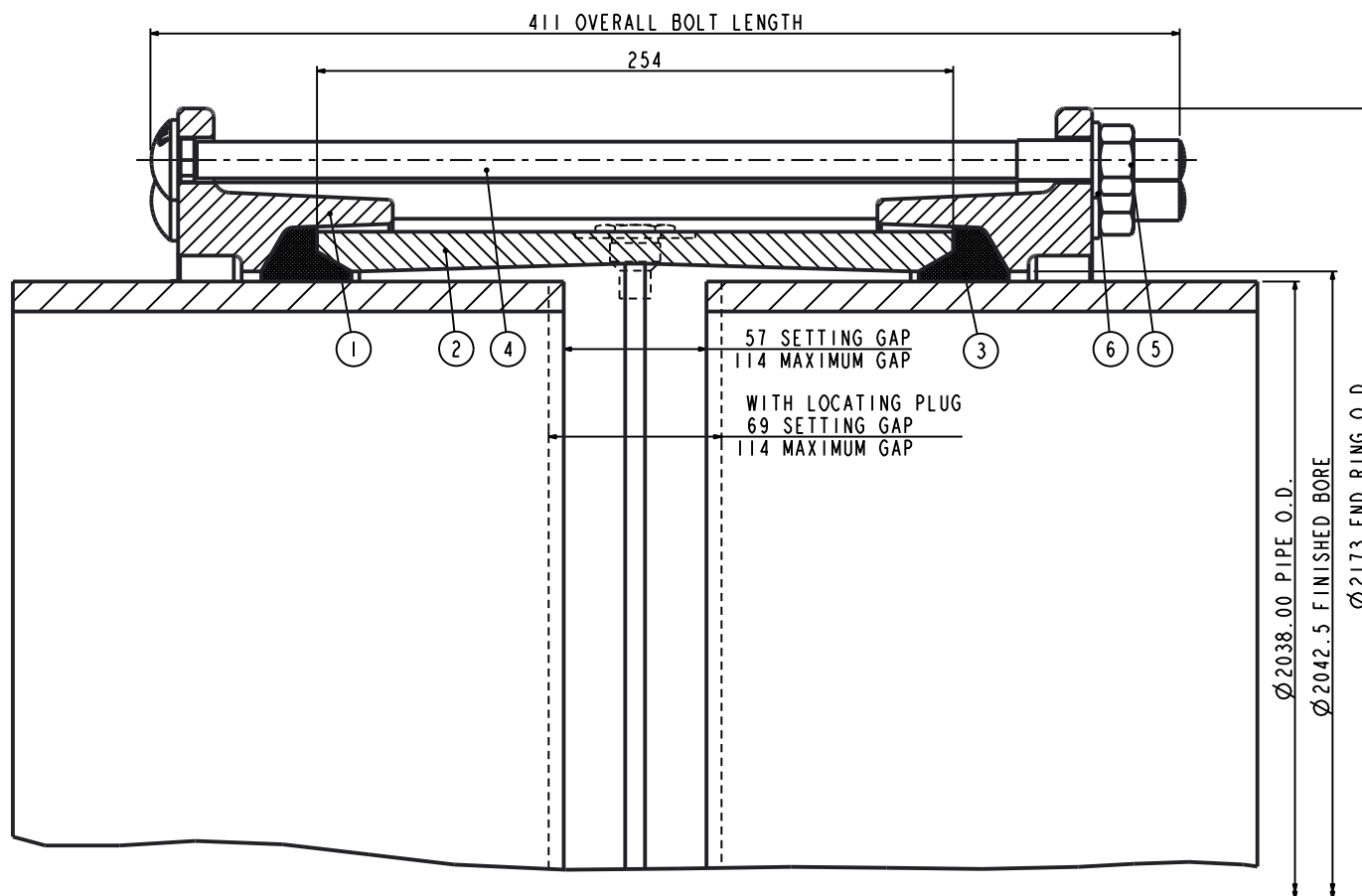


ALL PRODUCT DIMENSIONS ARE BEFORE COATING

REFERENCE DRAWING ONLY - NOT TO BE USED FOR INSPECTION PURPOSES

DO NOT SCALE

MATERIAL SPECIFICATION
<b>END RING (Part 1)</b> STEEL to BS EN10025-2 GRADE S355JR <b>CENTRE SLEEVE (Part 2)</b> STEEL to BS EN10025-2 GRADE S355JR <b>GASKET (Part 3)</b> RUBBER 70 HARDNESS Grade to suit service <b>BOLTS (Part 4)</b> STEEL BS EN ISO898-1 PROPERTY CLASS 4.8 <b>NUTS (Part 5)</b> STEEL BS4190 GRADE 4 <b>WASHERS (Part 6)</b> STAINLESS STEEL BS1449:PART 2 GRADE 304S15
FINISH SPECIFICATION
NOTES
Locating Plugs/Pin Register. If Locating Plugs/Pins are required, 3 Plugs/Pins are to be supplied.

ISOMETRIC VIEW



Pipe O.D includes a Coating of 3.0mm thick. Un-Coated Pipe is 2032.00mm O.D.

PIPE O.D.	PIPE MATERIAL	TOLERANCE ON O.D.		BOLTS	GASKET MOULD	TEST PRESSURE	WEIGHT KG	ASSEMBLY DRG NO
		+	-					
2038.00	STEEL	3.00	3.00	36-M16x400	J186H	33.10bar	419.66	8771_939

OVERALL DIMENSIONS DRAWING  
FOR REFERENCE ONLY  
VIKING JOHNSON RESERVE THE  
RIGHT TO AMEND DETAILS WITHOUT  
PRIOR NOTIFICATION

This drawing is the exclusive property of VIKING JOHNSON and is confidential and must not be reproduced or disclosed to a third party without written consent. It must be used only for the purpose which it has been issued and is returnable on request.

CRANE A Crane Co Company



OVERALL DIMENSIONS OF  
VIKING JOHNSON  
COUPLING ASSEMBLY  
'XSXG' SECTION  
FOR 2038.00mm O.D. PIPE

RELEASE LEVEL: Released

SHEET 1 OF 1



DRAWN	AUTO	SCALE	N.T.S.
DATE	07/12/18	GENERIC	8771_ODIMS_1

DRG NO SKP12875-1