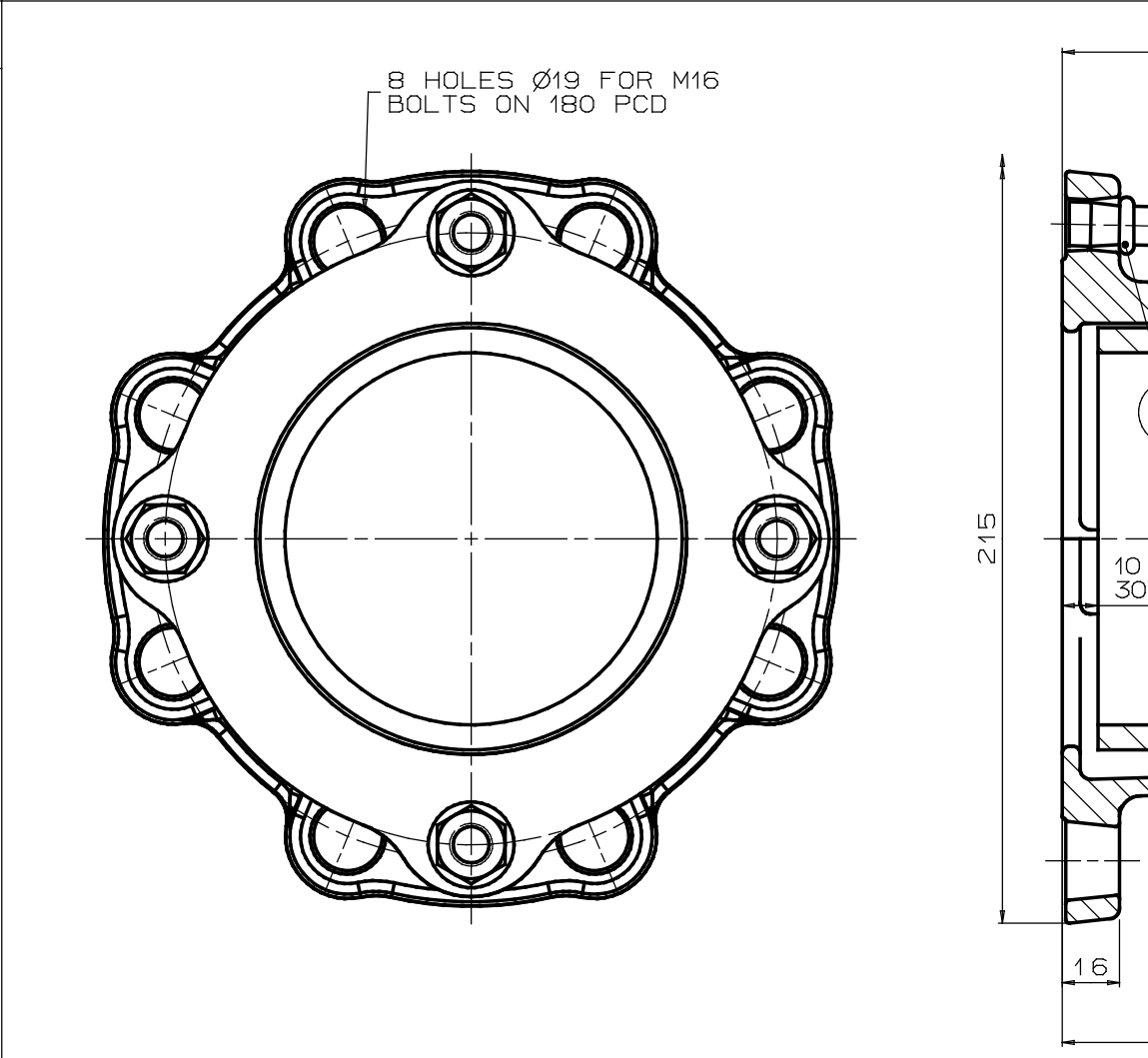


--	--	--

MATERIAL SPECIFICATION		
ADAPTOR BODY (Part 1) Ductile Iron to BS EN1563 SYMBOL EN-GJS-450-10		
END RING (Part 2) Ductile Iron to BS EN1563 SYMBOL EN-GJS-450-10		
GASKET (Part 3) Rubber 70 IRHD Moulded Compound Grade to suit service		
INSERT (Part 4) Stainless Steel to BS3146 Grade ANC2		
TEE-BOLT (Part 5) Steel to BS EN ISO898-1 Property Class 8.8		
NUT (Part 6) Steel to BS EN20898-2 Grade 8.0		
WASHER (Part 7) Stainless Steel to BS1449:Part 2 Grade 304S15		
'O' RING (Part 8) Rubber		

8	'O' RING	4
7	WASHER	4
6	NUT	4
5	TEE-BOLT	4
4	INSERT	4
3	GASKET	1
2	END RING	1
1	ADAPTOR BODY	1
PART	DESCRIPTION	NO OFF
LIST OF PARTS		



PIPE O.D.	FLANGE DRILLING	TEE-BOLTS	GASKET MOULD	GASKET INSERT	TEST PRESSURE	WEIGHT	ASSEMBLY DRG NO
118	100 PN10,16	4-M12x115	1618	4xE	24bar	4.4KG	7936/2

OVERALL DIMENSIONS FOR  
REFERENCE ONLY

VIKING JOHNSON RESERVE THE  
RIGHT TO AMEND DETAILS  
WITHOUT PRIOR NOTIFICATION

This drawing is the exclusive property of VIKING JOHNSON and  
is confidential and must not be reproduced or disclosed to a third  
party without written consent. It must be used only for the  
purpose which it has been issued and is returnable on request.

**CRANE** A Crane Co Company

OVERALL DIMENSIONS OF  
FLEXLOCK FLANGE ADAPTOR  
FOR 118mm O.D. PIPE  
WITH 100 PN10,16 FLANGE

**VIKING JOHNSON**  
World leaders in pipe joint's and repair products

DRAWN	CAD	DATE	16:1:97
SCALE	N.T.S.	P.N.	APPROVED
CHECKED			

DRG NO. SKC22382-2

ISSUE  
C