

ALL PRODUCT DIMENSIONS ARE BEFORE COATING

REFERENCE DRAWING ONLY - NOT TO BE USED FOR INSPECTION PURPOSES

DO NOT SCALE

MATERIAL SPECIFICATION

FLANGE ADAPTOR ASSEMBLY (Part 1)
FLANGE (Part 2)
 STEEL to
 BS EN10025-2:2004 GRADE S275JR
END RING (Part 3)
 STEEL to
 BS EN10025-2:2004 GRADE S275JR
CENTRE SLEEVE (Part 4)
 STEEL to
 BS EN10025-2:2004 GRADE S275JR
GASKET (Part 5)
 RUBBER 80 HARDNESS
 Grade to suit service
STUDS (Part 6)
 STEEL to
 BS EN ISO898-1:2013 PROPERTY CLASS 4.8
NUTS (Part 7)
 STEEL to
 BS4190:2001 GRADE 4
WASHERS (Part 8)
 STAINLESS STEEL to
 BS1449:PART 2:1983 GRADE 304S15
SPIGOT PIECE ASSEMBLY (Part 9)
SPIGOT PIPE (Part 10)
SPIGOT PIPE MADE FROM TUBE
 STEEL TUBE to BS EN10255:2004 or
 STEEL TUBE to
 BS EN10216-1:2002 GRADE P265TRI
SPIGOT PIPE MADE FROM FLAT BAR
 STEEL to
 BS EN10025-2:2004 GRADE S275JR
SPIGOT FLANGE (Part 11)
 STEEL to
 BS EN10025-2:2004 GRADE S275JR
TIE BOLT (Part 12)
 STEEL to
 BS EN10269:1999+A1:2006 NAME 42CrMo4
NUTS (Part 13)
 STEEL to
 BS EN20898-2:1994 PROPERTY CLASS 8.0
WASHERS (Part 14)
 STEEL to
 BS EN10269:1999+A1:2006 NAME 42CrMo4

FINISH SPECIFICATION

NOTES

OVERALL DIMENSIONS DRAWING
 FOR REFERENCE ONLY
 VIKING JOHNSON RESERVE THE
 RIGHT TO AMEND DETAILS WITHOUT
 PRIOR NOTIFICATION

This drawing is the exclusive property of VIKING JOHNSON and
 is confidential and must not be reproduced or disclosed to a third
 party without written consent. It must be used only for the
 purpose which it has been issued and is returnable on request.

CRANE A Crane Co Company

OVERALL DIMENSIONS OF
 DISMANTLING JOINT ASSEMBLY - YF2 SECTION
 ASSEMBLY - YF2 SECTION
 FOR 900 PN10 FLANGE DRILLING

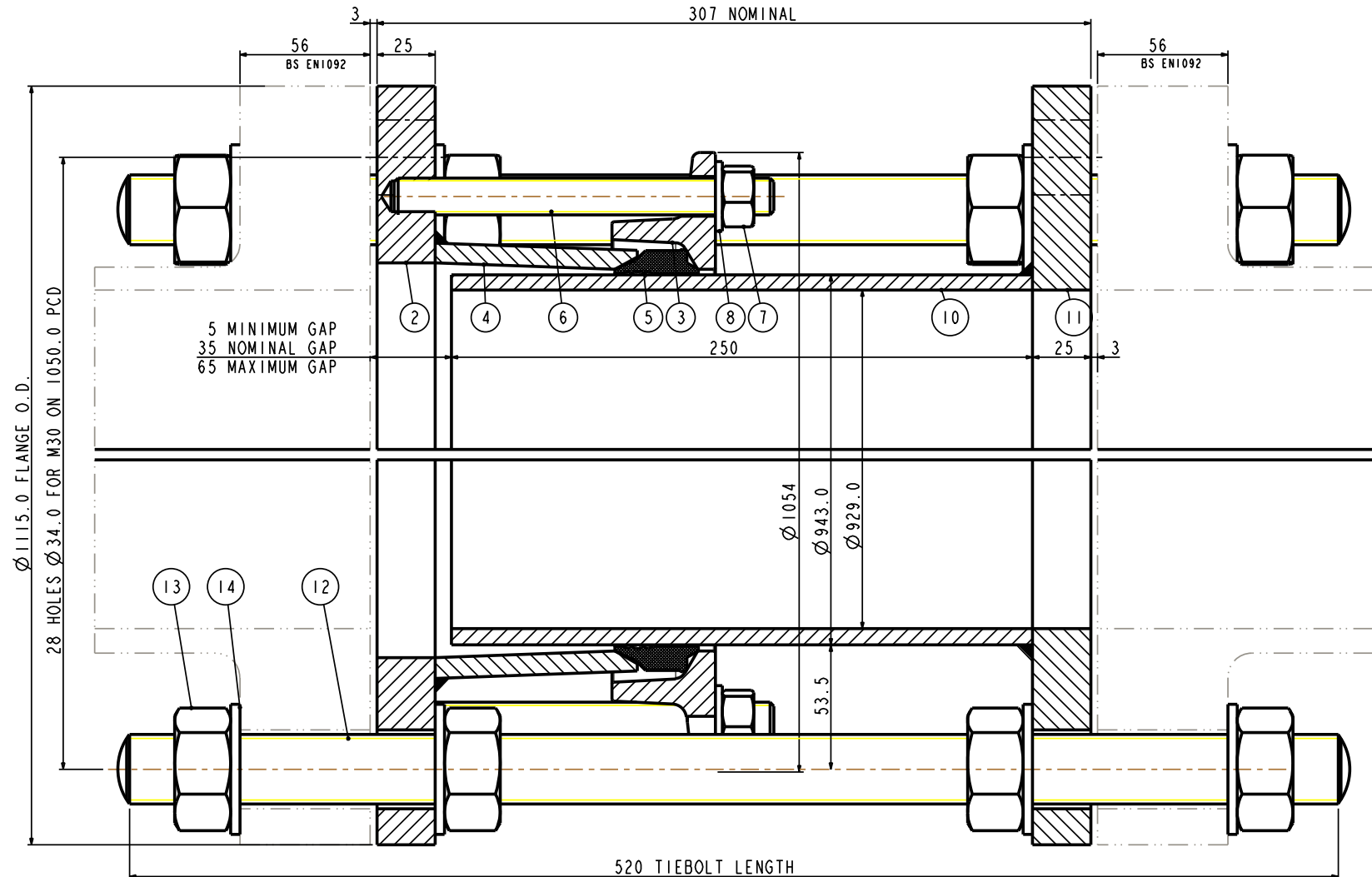
RELEASE LEVEL: Concept

SHEET 1 OF 2

VIKING JOHNSON
 World leaders in pipe joints and repair products

DRAWN	AUTO	SCALE	1:000
DATE	17/04/13	GENERIC	10435_YF2_UT

DRG NO SKP1104-1



FLANGE DRILLING	WORKING PRESSURE	TEST PRESSURE	GASKET	STUDS NO-SIZE	NO OF NOTCHES	TIE BOLTS NO-SIZE	WEIGHT KG	ASSEMBLY DRG NO
900 PN10	10.0bar	15.0bar	J70LS	14-M16x160	7	7-M30x520	211.6Kg	10435_445

ISOMETRIC VIEW

ALL PRODUCT DIMENSIONS ARE BEFORE COATING

REFERENCE DRAWING ONLY - NOT TO BE USED FOR INSPECTION PURPOSES

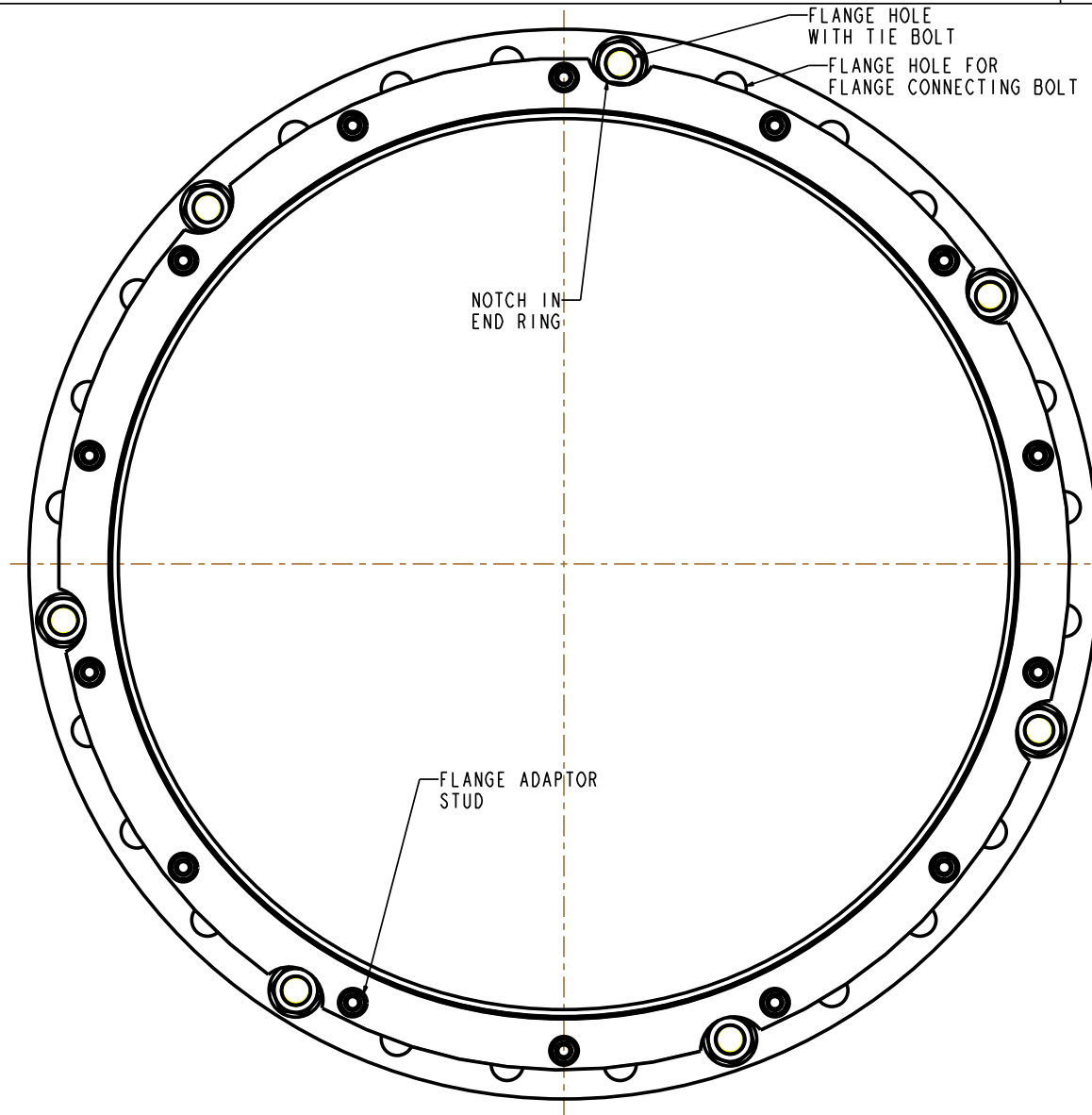
DO NOT SCALE

MATERIAL SPECIFICATION
FLANGE ADAPTOR ASSEMBLY (Part 1) FLANGE (Part 2) STEEL to BS EN10025-2:2004 GRADE S275JR END RING (Part 3) STEEL to BS EN10025-2:2004 GRADE S275JR CENTRE SLEEVE (Part 4) STEEL to BS EN10025-2:2004 GRADE S275JR GASKET (Part 5) RUBBER 80 HARDNESS Grade to suit service STUDS (Part 6) STEEL to BS EN ISO898-1:2013PROPERTY CLASS 4.8 NUTS (Part 7) STEEL to BS4190:2001 GRADE 4 WASHERS (Part 8) STAINLESS STEEL to BS1449:PART 2:1983 GRADE 304S15 SPIGOT PIECE ASSEMBLY (Part 9) SPIGOT PIPE (Part 10) SPIGOT PIPE MADE FROM TUBE STEEL TUBE to BS EN10255:2004 or STEEL TUBE to BS EN10216-1:2002GRADE P265TRI SPIGOT PIPE MADE FROM FLAT BAR STEEL to BS EN10025-2:2004 GRADE S275JR SPIGOT FLANGE (Part 11) STEEL to BS EN10025-2:2004 GRADE S275JR TIE BOLT (Part 12) STEEL to BS EN10269:1999+A1:2006 NAME 42CrMo4 NUTS (Part 13) STEEL to BS EN20898-2:1994 PROPERTY CLASS 8.0 WASHERS (Part 14) STEEL to BS EN10269:1999+A1:2006 NAME 42CrMo4

FINISH SPECIFICATION

NOTES

ISOMETRIC VIEW



OVERALL DIMENSIONS DRAWING
FOR REFERENCE ONLY
VIKING JOHNSON RESERVE THE
RIGHT TO AMEND DETAILS WITHOUT
PRIOR NOTIFICATION

This drawing is the exclusive property of VIKING JOHNSON and is confidential and must not be reproduced or disclosed to a third party without written consent. It must be used only for the purpose which it has been issued and is returnable on request.

TIE BOLT SPACING FOR
DISMANTLING JOINT ASSEMBLY - YF2 SECTION
ASSEMBLY - YF2 SECTION
FOR 900 PN10 FLANGE DRILLING

RELEASE LEVEL: Concept

SHEET 2 OF 2

VIKING JOHNSON <small>World leaders in pipe joints and repair products</small>			
DRAWN	AUTO	SCALE	1:000
DATE	17/04/13	GENERIC	10435.YF2.UT
DRG NO SKP1104-1			