

ALL PRODUCT DIMENSIONS ARE BEFORE COATING

REFERENCE DRAWING ONLY - NOT TO BE USED FOR INSPECTION PURPOSES

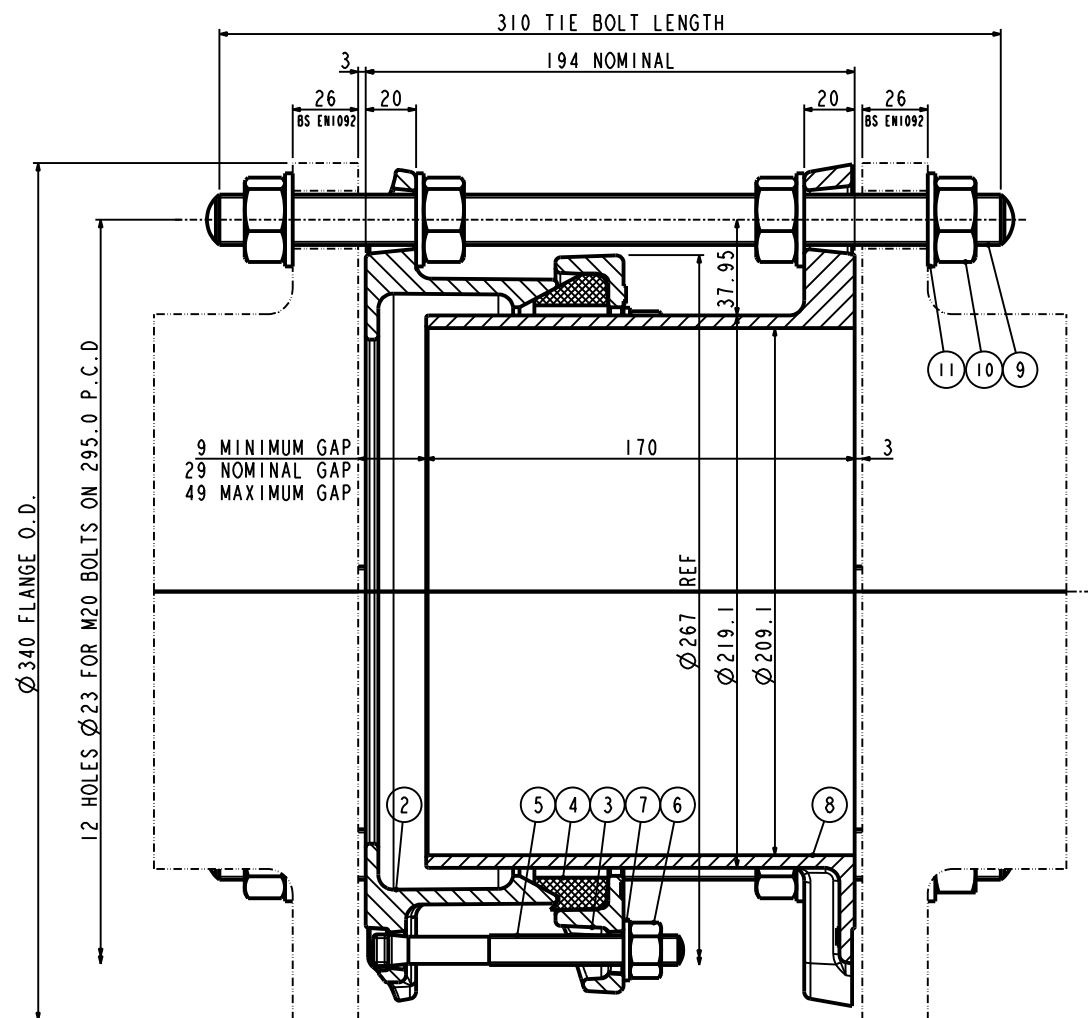
DO NOT SCALE

# MATERIAL SPECIFICATION

**FLANGE ADAPTOR ASSEMBLY (Part 1)**  
**FLANGE ADAPTOR (Part 2)**  
 DUCTILE IRON BS EN1563  
 SYMBOL EN-GJS-450-10  
**END RING (Part 3)**  
 DUCTILE IRON BS EN1563  
 SYMBOL EN-GJS-450-10  
**GASKET (Part 4)**  
 RUBBER 80 HARDNESS  
 Grade to suit service  
**TEE-BOLTS (Part 5)**  
 STEEL to  
 BS EN ISO898-1 PROPERTY CLASS 4.8  
**NUTS (Part 6)**  
 STEEL to  
 BS4190 GRADE 4  
**WASHERS (Part 7)**  
 STAINLESS STEEL to  
 BS1449:PART 2 GRADE 304S15  
**SPIGOT PIECE (Part 8)**  
 DUCTILE IRON BS EN1563  
 SYMBOL EN-GJS-450-10  
**TIE BOLT (Part 9)**  
 STEEL to  
 BS EN10269+A1NAME 42CrMo4  
**NUTS (Part 10)**  
 STEEL to  
 BS EN20898-2 PROPERTY CLASS 8.0  
**WASHERS (Part 11)**  
 STEEL to  
 BS EN10269+A1NAME 42CrMo4

## FINISH SPECIFICATION

## NOTES



FLANGE DRILLING	WORKING PRESSURE	TEST PRESSURE	GASKET	STUDS NO-SIZE	TIE BOLTS NO-SIZE	WEIGHT Kg	ASSEMBLY DRG NO
200PN16	16.0 bar	24.0 bar	12477_29	4-M12x115	4-M20x310	21.6	10435_376

OVERALL DIMENSIONS DRAWING FOR REFERENCE ONLY  
 VIKING JOHNSON RESERVE THE RIGHT TO AMEND DETAILS WITHOUT PRIOR NOTIFICATION

This drawing is the exclusive property of VIKING JOHNSON and is confidential and must not be reproduced or disclosed to a third party without written consent. It must be used only for the purpose which it has been issued and is returnable on request.

OVERALL DIMENSIONS OF  
 DISMANTLING JOINTS ASSEMBLY -QUICKFIT SECTION  
 200PN16 FLANGE DRILLING



DRAWN	AUTO	SCALE	0.143
DATE	13-Sep-17	GENERIC	10435_ALL.CAST.001MS.1

DRG NO SKP997-1

ISOMETRIC VIEW

CRANE A Crane Co Company

RELEASE LEVEL: Concept

SHEET 1 OF 1