

ALL PRODUCT DIMENSIONS ARE BEFORE COATING

REFERENCE DRAWING ONLY - NOT TO BE USED FOR INSPECTION PURPOSES

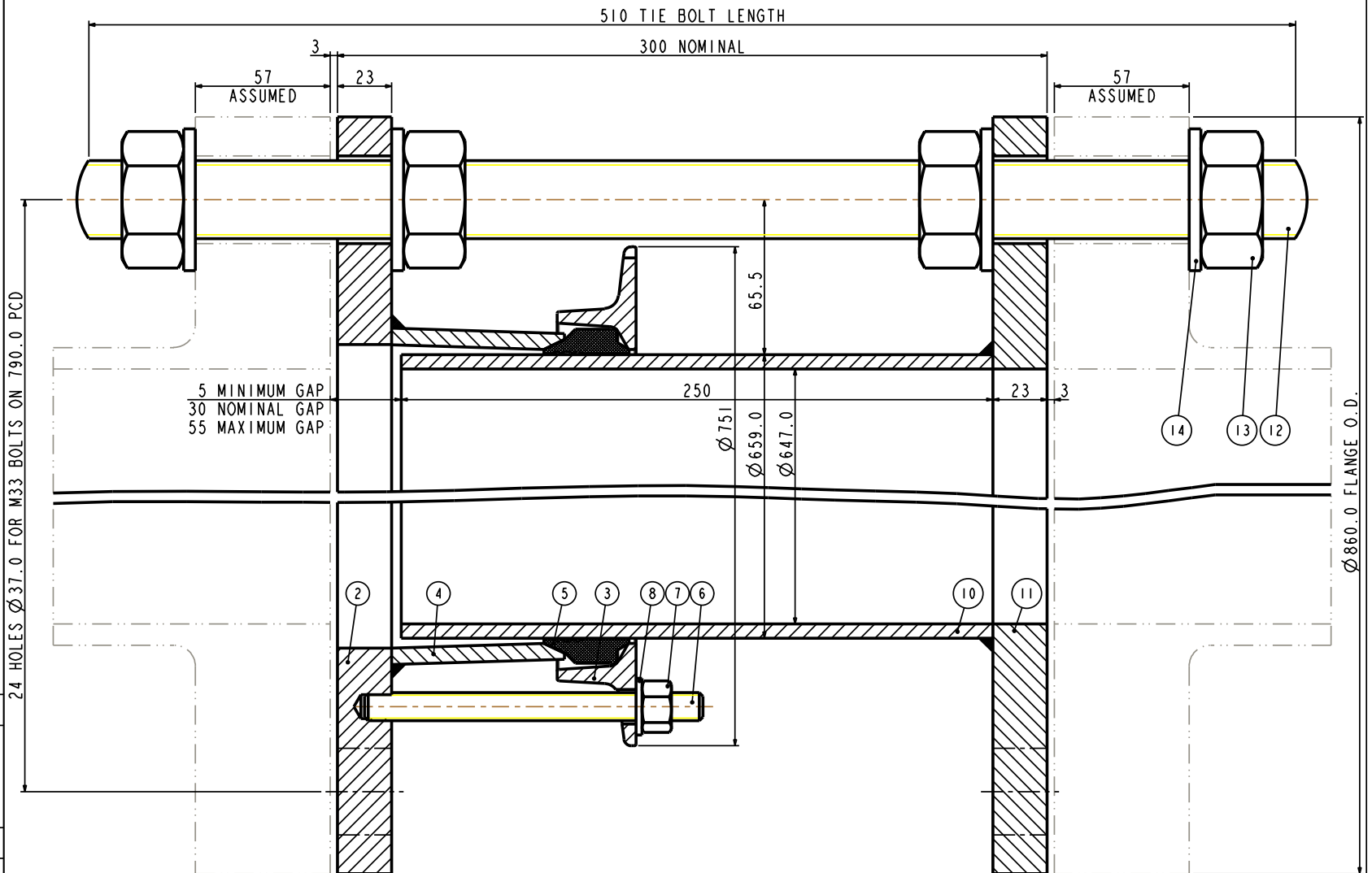
DO NOT SCALE

# MATERIAL SPECIFICATION

**FLANGE ADAPTOR ASSEMBLY (Part 1)**  
**FLANGE (Part 2)**  
 STEEL to  
 BS EN10025-2 GRADE S275JR  
**END RING (Part 3)**  
 STEEL to  
 BS EN10025-2 GRADE S275JR  
**CENTRE SLEEVE (Part 4)**  
 STEEL to  
 BS EN10025-2 GRADE S275JR  
**GASKET (Part 5)**  
 RUBBER 80 HARDNESS  
 Grade to suit service  
**STUDS (Part 6)**  
 STEEL to  
 BS EN ISO898-1 PROPERTY CLASS 4.8  
**NUTS (Part 7)**  
 STEEL to  
 BS4190 GRADE 4  
**WASHERS (Part 8)**  
 STAINLESS STEEL to  
 BS1449:PART 2 GRADE 304S15  
**SPIGOT PIECE ASSEMBLY (Part 9)**  
**SPIGOT PIPE (Part 10)**  
 SPIGOT PIPE MADE FROM TUBE  
 STEEL TUBE to BS EN10255 or  
 STEEL TUBE to  
 BS EN10216-1 GRADE P265TRI  
 SPIGOT PIPE MADE FROM FLAT BAR  
 STEEL to  
 BS EN10025-2 GRADE S275JR  
**SPIGOT FLANGE (Part 11)**  
 STEEL to  
 BS EN10025-2 GRADE S275JR  
**TIE BOLT (Part 12)**  
 STEEL to  
 BS EN10269+A1NAME 42CrMo4  
**NUTS (Part 13)**  
 STEEL to  
 BS EN20898-2 PROPERTY CLASS 8.0  
**WASHERS (Part 14)**  
 STEEL to  
 BS EN10269+A1NAME 42CrMo4

## FINISH SPECIFICATION

## NOTES



FLANGE DRILLING	WORKING PRESSURE	TEST PRESSURE	GASKET	STUDS NO-SIZE	NO OF NOTCHES	TIE BOLTS NO-SIZE	WEIGHT KG	ASSEMBLY DRG NO
650 PN16	16.0bar	24.0bar	J61LS	8-M12x140	6	6-M33x510	148.3Kg	10435_52

OVERALL DIMENSIONS DRAWING  
 FOR REFERENCE ONLY  
 VIKING JOHNSON RESERVE THE  
 RIGHT TO AMEND DETAILS WITHOUT  
 PRIOR NOTIFICATION

This drawing is the exclusive property of VIKING JOHNSON and is confidential and must not be reproduced or disclosed in a third party without written consent. It must be used only for the purpose which it has been issued and is returnable on request.

CRANE A Crane Co Company

OVERALL DIMENSIONS OF  
 DISMANTLING JOINTS ASSEMBLY - LO2 SECTION  
 FOR 650 PN16 FLANGE DRILLING



DRAWN	AUTO	SCALE	1.000
DATE	16/12/15	GENERIC	10435_LO2_UT

DRG NO SKP2489-1

RELEASE LEVEL: Concept

SHEET 1 OF 2

ALL PRODUCT DIMENSIONS ARE BEFORE COATING

REFERENCE DRAWING ONLY - NOT TO BE USED FOR INSPECTION PURPOSES

DO NOT SCALE

MATERIAL SPECIFICATION

FLANGE ADAPTOR ASSEMBLY (Part 1)  
FLANGE (Part 2)  
STEEL to  
BS EN10025-2 GRADE S275JR  
END RING (Part 3)  
STEEL to  
BS EN10025-2 GRADE S275JR  
CENTRE SLEEVE (Part 4)  
STEEL to  
BS EN10025-2 GRADE S275JR  
GASKET (Part 5)  
RUBBER 80 HARDNESS  
Grade to suit service  
STUDS (Part 6)  
STEEL to  
BS EN ISO898-1 PROPERTY CLASS 4.8  
NUTS (Part 7)  
STEEL to  
BS4190 GRADE 4  
WASHERS (Part 8)  
STAINLESS STEEL to  
BS1449:PART 2 GRADE 304S15  
SPIGOT PIECE ASSEMBLY (Part 9)  
SPIGOT PIPE (Part 10)  
SPIGOT PIPE MADE FROM TUBE  
STEEL TUBE to BS EN10255 or  
STEEL TUBE to  
BS EN10216-1 GRADE P265TRI  
SPIGOT PIPE MADE FROM FLAT BAR  
STEEL to  
BS EN10025-2 GRADE S275JR  
SPIGOT FLANGE (Part 11)  
STEEL to  
BS EN10025-2 GRADE S275JR  
TIE BOLT (Part 12)  
STEEL to  
BS EN10269+A1NAME 42CrMo4  
NUTS (Part 13)  
STEEL to  
BS EN20898-2 PROPERTY CLASS 8.0  
WASHERS (Part 14)  
STEEL to  
BS EN10269+A1NAME 42CrMo4

FINISH SPECIFICATION

NOTES

OVERALL DIMENSIONS DRAWING  
FOR REFERENCE ONLY  
VIKING JOHNSON RESERVE THE  
RIGHT TO AMEND DETAILS WITHOUT  
PRIOR NOTIFICATION

This drawing is the exclusive property of VIKING JOHNSON and  
is confidential and must not be reproduced or disclosed to a third  
party without written consent. It must be used only for the  
purpose which it has been issued and is returnable on request.

**CRANE** A Crane Co Company



TIE BOLT SPACING FOR  
DISMANTLING JOINTS ASSEMBLY - L02 SECTION  
FOR 650 PN16 FLANGE DRILLING

RELEASE LEVEL: Concept

SHEET 2 OF 2



DRAWN	AUTO	SCALE	1.000
DATE	16/12/15	GENERIC	10435_L02_UT

DRG NO SKP2489-1

