

ALL PRODUCT DIMENSIONS ARE BEFORE COATING  
REFERENCE DRAWING ONLY - NOT TO BE USED FOR INSPECTION PURPOSES

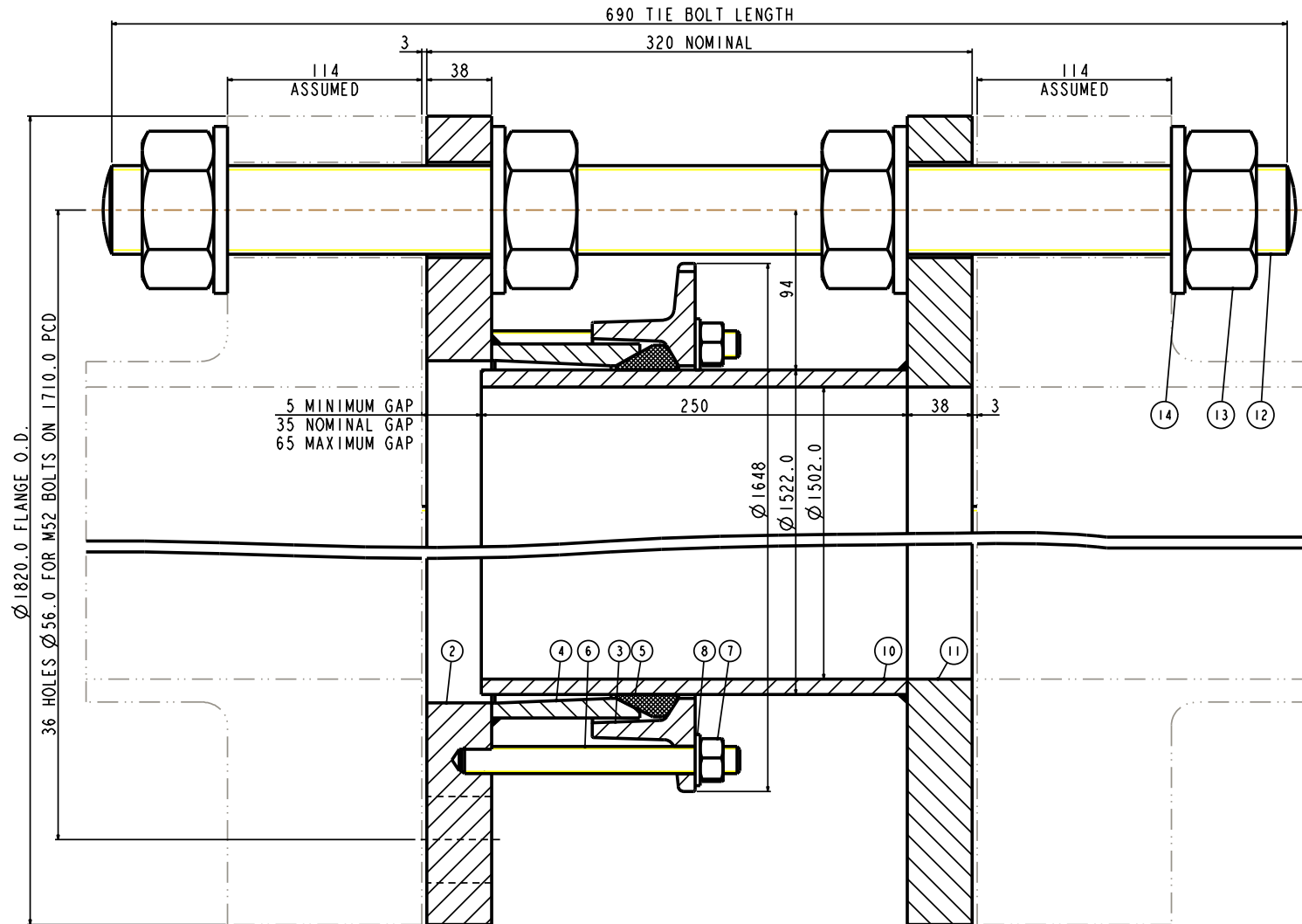
DO NOT SCALE

MATERIAL SPECIFICATION

FLANGE ADAPTOR ASSEMBLY (Part 1)  
FLANGE (Part 2)  
STEEL to  
BS EN10025-2:2004 GRADE S275JR  
END RING (Part 3)  
STEEL to  
BS EN10025-2:2004 GRADE S275JR  
CENTRIC SLEEVE (Part 4)  
STEEL to  
BS EN10025-2:2004 GRADE S355JR  
GASKET (Part 5)  
RUBBER 70 HARDNESS  
Grade to suit service  
STUDS (Part 6)  
STEEL to  
BS EN 150898-1:2013 PROPERTY CLASS 4.8  
NUTS (Part 7)  
STEEL to  
BS4190:2001 GRADE 4  
WASHERS (Part 8)  
STAINLESS STEEL to  
BS1449:PART 2:1983 GRADE 304S15  
SPIGOT PIECE ASSEMBLY (Part 9)  
SPIGOT PIPE (Part 10)  
SPIGOT PIPE MADE FROM TUBE  
STEEL TUBE to BS EN10255:2004 or  
STEEL TUBE to  
BS EN10216-1:2013 GRADE P265TR1  
SPIGOT PIPE MADE FROM FLAT BAR  
STEEL to  
BS EN10025-2:2004 GRADE S275JR  
SPIGOT FLANGE (Part 11)  
STEEL to  
BS EN10025-2:2004 GRADE S275JR  
TIE BOLT (Part 12)  
STEEL to  
BS EN10269:1999+A1:2006 NAME 42CrMo4  
NUTS (Part 13)  
STEEL to  
BS EN20898-2:1994 PROPERTY CLASS 8.0  
WASHERS (Part 14)  
STEEL to  
BS EN10269:1999+A1:2006 NAME 42CrMo4

FINISH SPECIFICATION

NOTES



FLANGE DRILLING	WORKING PRESSURE	TEST PRESSURE	GASKET	STUDS NO-SIZE	NO OF NOTCHES	TIE BOLTS NO-SIZE	WEIGHT KG	ASSEMBLY DRG NO
1500 PN16	16.0bar	24.0bar	J126M	18-M16x160	9	9-M52x690	760	10435_81

OVERALL DIMENSIONS DRAWING  
FOR REFERENCE ONLY  
VIKING JOHNSON RESERVE THE  
RIGHT TO AMEND DETAILS WITHOUT  
PRIOR NOTIFICATION

This drawing is the exclusive property of VIKING JOHNSON and  
is confidential and may not be reproduced or disclosed to a third  
party without written consent. It must be used only for the  
purpose stated on this drawing and is not to be used for any other  
purpose.

CRANE A Crane Co Company

OVERALL DIMENSIONS OF  
DISMANTLING JOINT ASSEMBLY - A2E SECTION  
ASSEMBLY - A2E SECTION  
FOR 1500 PN16 FLANGE DRILLING

RELEASE LEVEL : Concept

SHEET 1 OF 2

**VIKING JOHNSON**  
World leaders in pipe joints and repair products

DRAWN AUTO SCALE 0.059  
DATE 13/01/15 GENERIC 10435\_A2E\_UT

DRG NO SKP1759-1

ISOMETRIC VIEW

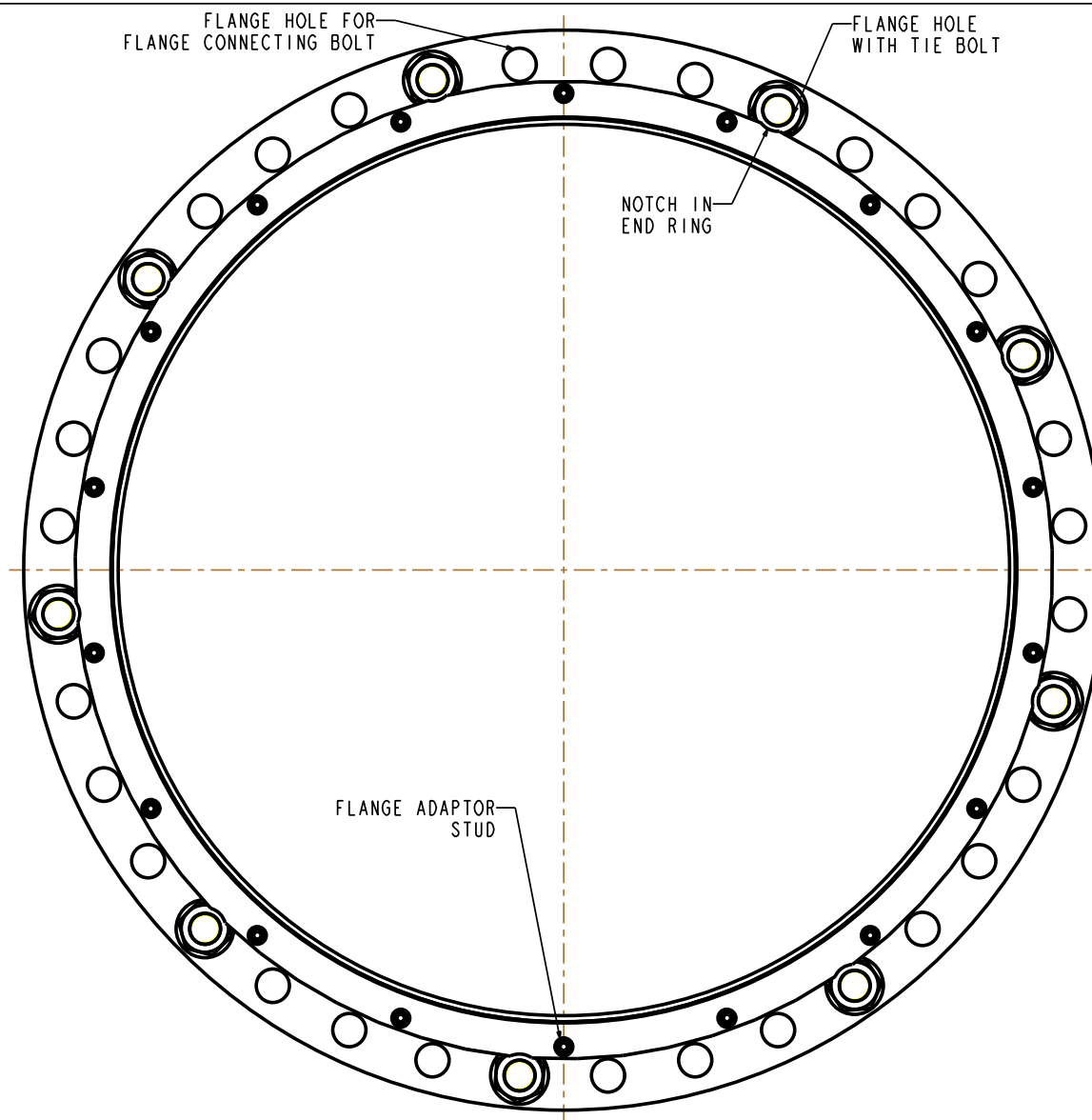
ALL PRODUCT DIMENSIONS ARE BEFORE COATING

REFERENCE DRAWING ONLY - NOT TO BE USED FOR INSPECTION PURPOSES

DO NOT SCALE

**MATERIAL SPECIFICATION**

FLANGE ADAPTOR ASSEMBLY (Part 1)  
FLANGE (Part 2)  
 STEEL to  
 BS EN10025-2:2004 GRADE S275JR  
END RING (Part 3)  
 STEEL to  
 BS EN10025-2:2004 GRADE S275JR  
CENTRE SLEEVE (Part 4)  
 STEEL to  
 BS EN10025-2:2004 GRADE S355JR  
GASKET (Part 5)  
 RUBBER 70 HARDNESS  
 Grade to suit service  
STUDS (Part 6)  
 STEEL to  
 BS EN ISO898-1:2013PROPERTY CLASS 4.8  
NUTS (Part 7)  
 STEEL to  
 BS4190:2001 GRADE 4  
WASHERS (Part 8)  
 STAINLESS STEEL to  
 BS1449:PART 2:1983 GRADE 304S15  
SPIGOT PIECE ASSEMBLY (Part 9)  
SPIGOT PIPE (Part 10)  
SPIGOT PIPE MADE FROM TUBE  
 STEEL TUBE to BS EN10255:2004 or  
 STEEL TUBE to  
 BS EN10216-1:2013GRADE P265TRI  
SPIGOT PIPE MADE FROM FLAT BAR  
 STEEL to  
 BS EN10025-2:2004 GRADE S275JR  
SPIGOT FLANGE (Part 11)  
 STEEL to  
 BS EN10025-2:2004 GRADE S275JR  
TIE BOLT (Part 12)  
 STEEL to  
 BS EN10269:1999+A1:2006 NAME 42CrMo4  
NUTS (Part 13)  
 STEEL to  
 BS EN20898-2:1994 PROPERTY CLASS 8.0  
WASHERS (Part 14)  
 STEEL to  
 BS EN10269:1999+A1:2006 NAME 42CrMo4



**FINISH SPECIFICATION**

**NOTES**

OVERALL DIMENSIONS DRAWING  
 FOR REFERENCE ONLY  
 VIKING JOHNSON RESERVE THE  
 RIGHT TO AMEND DETAILS WITHOUT  
 PRIOR NOTIFICATION

This drawing is the exclusive property of VIKING JOHNSON and is confidential and must not be reproduced or disclosed to a third party without written consent. It must be used only for the purpose which it has been issued and is returnable on request.

OVERALL DIMENSIONS OF  
 DISMANTLING JOINT ASSEMBLY - A2E SECTION  
 ASSEMBLY - A2E SECTION  
 FOR 1500 PN16 FLANGE DRILLING



DRAWN	AUTO	SCALE	0.059
DATE	13/01/15	GENERIC	10435_A2E_UT

ISOMETRIC VIEW

CRANE A Crane Co Company

RELEASE LEVEL: Concept

SHEET 2 OF 2

DRG NO SKP1759-1