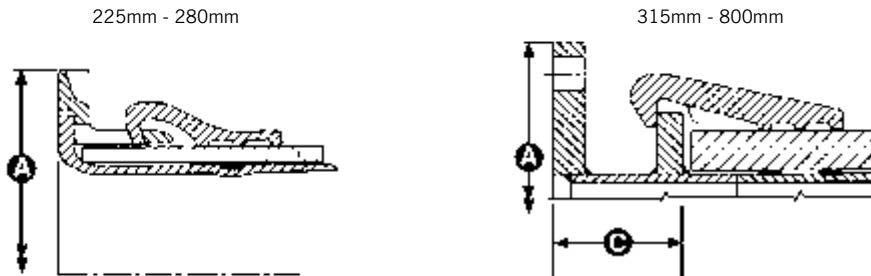


AquaGrip Flange Adaptors 225mm to 1600mm

Datasheet 1/2

Flange Adaptor



Note:
 *SDR = Standard Dimensional Ratio
 = $\frac{\text{Pipe OD}}{\text{Wall Thickness}}$

** The chart introduces the popular flange drillings. Other drillings may be possible - contact Viking Johnson for further details

AquaGrip Flange Adaptors (joins PE pipe to flanged equipment)

Pipe OD	SDR Rating *				Flange Drilling **	Pressure Rating	Dimensions		No. of Bolts	Bolt Size	Weight (kg) (approx)	Gasket - 13022/			
	11	17/17.6	21	26/33			A (mm)	C (mm)				11	17/17.6	21	26/33
225	✓	✓	✓	✓	200	PN16	340	-	4	M16 x 130	15	1763	1685	1685	1685
250	✓	✓	✗	✓	200	PN16	340	-	4	M16 x 130	24	1655	1686	1686	1686
250	✓	✓	✓	✓	250	PN16	405	-	4	M16 x 130	23	1685	1686	1686	1686
280	✓	✓	✓	✓	250	PN16	405	-	4	M16 x 130	32	1686	1713	1713	1687
315	✓	✓	✓	✓	250	PN16	405	170	4	M20 x 120	48	4	24	6	6
355	✓	✓	✓	✓	300	PN16	460	138	6	M20 x 120	65	6	32	34	8
355	✓	✓	✓	✓	350	PN16	520	138	6	M20 x 120	65	6	32	34	8
400	✓	✓	✓	✓	400	PN16	580	134	9	M20 x 120	95	34	9	25	25
450	✓	✓	✓	✓	400	PN16	580	134	9	M27 x 150	160	25	11	12	12
450	✓	✓	✓	✓	450	PN16	640	134	9	M27 x 150	186	25	11	12	12
500	✓	✓	✓	✓	400	PN16	580	175	9	M27 x 150	169	11	26	27	13
500	✓	✓	✓	✓	450	PN16	640	134	9	M27 x 150	169	11	26	27	13
500	✓	✓	✓	✓	500	PN16	715	134	9	M27 x 150	199	11	26	27	13
560	✓	✓	✓	✓	450	PN16	640	235	12	M27 x 150	200	27	28	14	14
560	✓	✓	✓	✓	500	PN16	715	180	12	M27 x 150	248	27	28	14	14
630	✓	✓	✓	✓	600	PN16	840	220	12	M27 x 150	311	14	15	15	29
710	✗	✓	✓	✓	700	PN16	910	310	12	M27 x 150	311	-	16	35	35/36
800	✗	✓	✓	✓	700	PN16	910	270	15	M27 x 150	470	-	31	18	19
800	✗	✓	✓	✓	800	PN16	1025	270	15	M27 x 150	497	-	31	18	19
900	✗	✓	✓	✓	900	PN16	1125		15	M33 x 160	800	-	36	20	37
1000	✗	✓	✓	✓	1000	PN16	1255		18	M33 x 160	1107	-	20	20	20
1200	✗	✗	✗	✓	1200	PN16	1485		18	M33 x 180	1127	-	-	-	22
1400	✗	✗	✗	✓	1400	PN16	1685		18	M33 x 180	1582	-	-	-	23
1600	✗	✗	✗	✓	1600	PN16	1930		24	M33 x 180	1808	-	-	-	-

- ✓ Product installation requires heating mats at all temperatures.
- ✓ Product installation requires heating mats if temperature of bore to the pipe falls below +5°C.
- ✗ PE pipe wall too thick – do not have a product.

For confirmation of other sizes please contact our Marketing Department.

Every effort has been made to ensure that the information contained in this publication is accurate at the time of publishing. Crane Ltd assumes no responsibility or liability for typographical errors or omissions or for any misinterpretation of the information within the publication and reserves the right to change without notice.

AquaGrip Flange Adaptors 225mm to 1600mm

Datasheet

2/2

Technical Information

Working Pressure Rating

Water 16 bar

Gas not approved

Vacuum Pressure

Capable of accommodating a vacuum pressure of -0.7 bar

Site Test Pressure

1.5 times working pressure for short duration (2 hours)

Pipe Material / Support Liner

AquaGrip can be used on both MDPE (PE80) and HPPE (PE100) with SDR ratings as defined in the table on the previous page.

Angularity (in accordance with BS EN 12842)

Flange Adaptors 1.5°

Bolt Torque/Spanner

Successful installation of LD AquaGrip flange adaptors requires the following bolt torque to be achieved on all clamp band bolts:-

- M16 bolts 95 - 110Nm
- M20 bolts 190 - 215Nm
- M27 bolts 350 - 405Nm
- M33 bolts 675 - 750Nm

Temperature Rating of Product

EPDM -20°C to +40°C

AquaGrip is not suitable for use on heating systems with fluctuating temperatures.

End Load Due to Internal Pressure

AquaFast Fully restrained fitting, and has been designed to meet the performance requirements of BS EN 12842, ISO 178875 (supersedes ISO 12436.2) and ISO 4-01-02 (formerly WIS 4-24-01) Type 1 for sizes up to and including 450mm, Type 2 for sizes 500mm and above.

Approvals

The following water contact materials used in AquaGrip are approved for use with potable water:-

Rilsan Nylon 11:

- WRAS, DVGW, W270, ACS & KIWA

EPDM Gaskets:

- WRAS

In addition to the above, AquaGrip as a finished product has KIWA certification verifying that the above products comply with the requirements of the Water Supply (Water Fittings) Regulations for England and Wales 1999, the Water Byelaws 2000, Scotland and the Water Regulations Northern Ireland.

Materials & Relevant Standards

Flange adaptor body

280mm and below: SG iron to BS EN 1563
Symbol EN-GJS-450-10.

315mm and above: mild steel to BS EN10025 Grade S275.

Clamp band

SG iron (225mm to 800mm) to BS EN 1563
Symbol EN-GJS-450-10.

Mild steel to BS EN10025 Grade S275 (900mm to 1600mm).

Liner

(225 -280mm sizes): aluminium to BS1490 Grade LM 27M.

Gaskets

70 IRHD EPDM to BS EN 681-1 Type WA. WRAS listed.

Coatings

Flange Adaptor Body, Clamp Bands & Liners:

- Rilsan Nylon 11 (Black), WRAS listed.

Bolts, Nuts & Washers:

- Zinc plated followed by Grey Flurene® 177.

Every effort has been made to ensure that the information contained in this publication is accurate at the time of publishing. Crane Ltd assumes no responsibility or liability for typographical errors or omissions or for any misinterpretation of the information within the publication and reserves the right to change without notice.

DR10998_01_10_2024_ISSUE 8