

HandiRange®

Practical Stainless Steel Repair & Tapping Solutions

HandiClamp, HandiTap, HandiTee
& HandiBand

 **VIKING JOHNSON®**





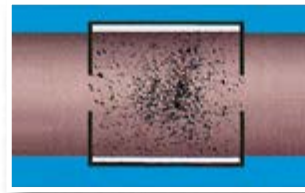
A Permanent Repair Solution for Small Bore Pipes

The HandiRange is a comprehensive range of stainless steel repair and tapping products, designed to serve the needs of today's water industry. The HandiRange comprises HandiClamp, HandiTee, HandiTap and HandiBand.

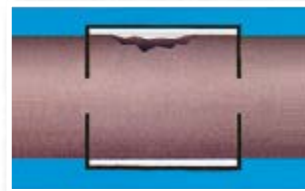
Available in various clamp lengths and suitable for virtually any pipe material, HandiRange products are available with either EPDM or Nitrile gaskets, with a maximum operating temperature of 40°C.

HandiClamp is constructed from 100% stainless steel and offers permanent repair for many types of pipe damage from DN50 (2") to DN1000 (40"). The HandiTee range offers the same design and construction features as the HandiClamp but has various female BSP outlet options, offering a quick, cost effective method of replacing service connections under pressure. The HandiTap range is extremely useful to make simple flanged connections on pipelines under pressure due to its lightweight and easy installation. Finally, HandiBand is a high quality repair clamp designed for localised damage on small bore pipes DN15 to DN50 (1/2" – 2").

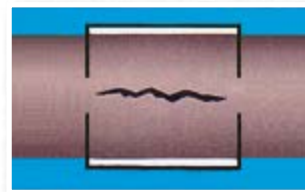
Ideal For



Corrosion holes



Impact damage



Longitudinal cracks

Note: HandiRange products will repair localised damage only. The maximum diameter of the hole in PE pipe that can be repaired by HandiClamp varies according to pipe diameter and clamp length.



Pipe Materials



HandiRange Repair & Tapping Solutions

Product Design Benefits

Corrosion Protection

Components constructed of fully-passivated stainless steel (Grade 304) with no need for any further protection on site (e.g. on-site wrapping). Bolts are secured with Dacromet coated nuts to prevent galling.

Easy Installation

Rapid installation in poor site conditions, made easy with simple, 'flip-over' action and self retaining bolts.



First Time Seal

All encompassing waffle gasket offers a guaranteed reliable seal even on badly corroded pipes.

Pipe Repairs

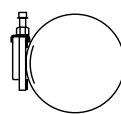
Clamps & Taps

Customer Benefits

- ▶ No specialist equipment required, standard under-pressure equipment can be used with HandiTee and HandiTap.
- ▶ No costly mains shutdown with HandiTee and HandiTap, allowing branch connections whilst under pressure.

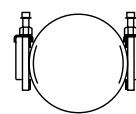
- ▶ Reduced stock holding due to wide tolerance in the range.

1 part clamp



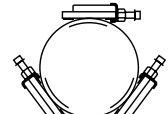
Up to 10mm tolerance

2 part clamp



Up to 20mm tolerance

3 part clamp



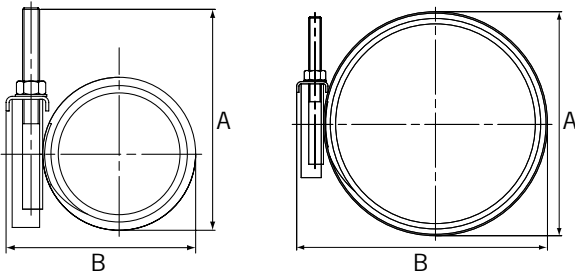
Up to 30mm tolerance

DR11623_01_10_2024_(ISSUE 9)_GB

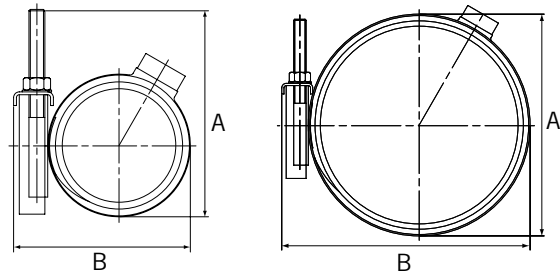
HandiClamp & HandiTap Single Band

Datasheet 1/2

HandiClamp Single Band



HandiTap Single Band



HandiClamp & HandiTap Single Band

| OD Range (mm) | A (mm) | B (mm) | Max Outlet Size* | Working** Pressure (bar) | | Clamp Length*** | | | | | | | | | | | |
|---------------|--------|--------|------------------|--------------------------|------------------|-----------------|------------------|--------------|------------------|--------------|------------------|--------------|------------------|--------------|------|--------------|-------|
| | | | | | | 150 (mm) | | 200 (mm) | | 250 (mm) | | 300 (mm) | | 400 (mm) | | 500 (mm) | |
| | | | | | | Bolt Details | | Bolt Details | | Bolt Details | | Bolt Details | | Bolt Details | | Bolt Details | |
| BSP | Water | Gas | No.-Dia x Length | Weight (kg) | No.-Dia x Length | Weight (kg) | No.-Dia x Length | Weight (kg) | No.-Dia x Length | Weight (kg) | No.-Dia x Length | Weight (kg) | No.-Dia x Length | Weight (kg) | | | |
| 44 - 48 | 141 | 77 | 1.25" BSP | 24.0 | 4.0 | 2-M12 x 135 | 1.13 | 2-M12 x 135 | 1.35 | 3-M12 x 135 | 1.89 | 3-M12 x 135 | 2.10 | | | | |
| 48 - 52 | 143 | 82 | 1.25" BSP | 24.0 | 4.0 | 2-M12 x 135 | 1.15 | 2-M12 x 135 | 1.37 | 3-M12 x 135 | 1.93 | 3-M12 x 135 | 2.14 | | | | |
| 54 - 58 | 146 | 88 | 1.5" BSP | 24.0 | 4.0 | 2-M12 x 135 | 1.18 | 2-M12 x 135 | 1.41 | 3-M12 x 135 | 1.98 | 3-M12 x 135 | 2.20 | | | | |
| 58 - 64 | 148 | 92 | 1.5" BSP | 24.0 | 4.0 | 2-M12 x 135 | 1.20 | 2-M12 x 135 | 1.44 | 3-M12 x 135 | 2.01 | 3-M12 x 135 | 2.24 | | | | |
| 60 - 67 | 149 | 94 | 1.5" BSP | 24.0 | 4.0 | 2-M12 x 135 | 1.21 | 2-M12 x 135 | 1.45 | 3-M12 x 135 | 2.03 | 3-M12 x 135 | 2.26 | | | | |
| 63 - 70 | 151 | 97 | 1.5" BSP | 24.0 | 4.0 | 2-M12 x 135 | 1.23 | 2-M12 x 135 | 1.47 | 3-M12 x 135 | 2.05 | 3-M12 x 135 | 2.29 | | | | |
| 68 - 76 | 153 | 102 | 1.5" BSP | 24.0 | 4.0 | 2-M12 x 135 | 1.25 | 2-M12 x 135 | 1.51 | 3-M12 x 135 | 2.09 | 3-M12 x 135 | 2.34 | | | | |
| 75 - 83 | 157 | 109 | 1.5" BSP | 24.0 | 4.0 | 2-M12 x 135 | 1.29 | 2-M12 x 135 | 1.55 | 3-M12 x 135 | 2.15 | 3-M12 x 135 | 2.41 | | | | |
| 82 - 89 | 160 | 116 | 1.5" BSP | 20.0 | 4.0 | 2-M12 x 135 | 1.36 | 2-M12 x 135 | 1.60 | 3-M12 x 135 | 2.21 | 3-M12 x 135 | 2.48 | | | | |
| 87 - 96 | 163 | 121 | 1.5" BSP | 20.0 | 4.0 | 2-M12 x 135 | 1.38 | 2-M12 x 135 | 1.63 | 3-M12 x 135 | 2.25 | 3-M12 x 135 | 2.53 | 4-M12 x 135 | 3.38 | | |
| 95 - 105 | 167 | 129 | 2.0" BSP | 20.0 | 4.0 | 2-M12 x 135 | 1.49 | 2-M12 x 135 | 1.77 | 3-M12 x 135 | 2.42 | 3-M12 x 135 | 2.73 | 4-M12 x 135 | 3.65 | | |
| 102 - 112 | 170 | 136 | 2.0" BSP | 20.0 | 4.0 | 2-M12 x 135 | 1.54 | 2-M12 x 135 | 1.83 | 3-M12 x 135 | 2.49 | 3-M12 x 135 | 2.83 | 4-M12 x 135 | 3.78 | | |
| 113 - 123 | 176 | 147 | 2.0" BSP | 20.0 | 4.0 | 2-M14 x 135 | 1.67 | 2-M14 x 135 | 1.98 | 3-M14 x 135 | 2.70 | 3-M14 x 135 | 3.05 | 4-M14 x 135 | 4.07 | | |
| 120 - 131 | 179 | 154 | 2.0" BSP | 12.0 | 3.0 | 2-M14 x 135 | 1.71 | 2-M14 x 135 | 2.09 | 3-M14 x 135 | 2.84 | 3-M14 x 135 | 3.21 | 4-M14 x 135 | 4.29 | | |
| 132 - 142 | 185 | 166 | 2.0" BSP | 12.0 | 3.0 | | | 2-M14 x 135 | 2.17 | 3-M14 x 135 | 2.94 | 3-M14 x 135 | 3.34 | 4-M14 x 135 | 4.47 | | |
| 135 - 145 | 187 | 169 | 2.0" BSP | 12.0 | 3.0 | | | 2-M14 x 135 | 2.19 | 3-M14 x 135 | 2.97 | 3-M14 x 135 | 3.37 | 4-M14 x 135 | 4.51 | | |
| 147 - 157 | 193 | 181 | 2.0" BSP | 12.0 | 3.0 | | | 2-M14 x 135 | 2.28 | 3-M14 x 135 | 3.08 | 3-M14 x 135 | 3.50 | 4-M14 x 135 | 4.68 | | |
| 151 - 161 | 195 | 185 | 2.0" BSP | 12.0 | 3.0 | | | 2-M14 x 135 | 2.31 | 3-M14 x 135 | 3.11 | 3-M14 x 135 | 3.54 | 4-M14 x 135 | 4.73 | | |
| 160 - 170 | 199 | 194 | 2.0" BSP | 12.0 | 3.0 | | | 2-M14 x 135 | 2.39 | 3-M14 x 135 | 3.22 | 3-M14 x 135 | 3.67 | 4-M14 x 135 | 4.91 | | |
| 167 - 178 | 203 | 201 | 2.0" BSP | 12.0 | 3.0 | | | 2-M14 x 135 | 2.44 | 3-M14 x 135 | 3.28 | 3-M14 x 135 | 3.75 | 4-M14 x 135 | 5.00 | | |
| 176 - 187 | 207 | 210 | 2.0" BSP | 12.0 | 3.0 | | | 2-M14 x 135 | 2.50 | 3-M14 x 135 | 3.36 | 3-M14 x 135 | 3.84 | 4-M14 x 135 | 5.13 | | |
| 186 - 196 | 212 | 220 | 2.0" BSP | 12.0 | 3.0 | | | 2-M14 x 135 | 2.58 | 3-M14 x 135 | 3.45 | 3-M14 x 135 | 3.95 | 4-M14 x 135 | 5.27 | | |
| 193 - 203 | 216 | 227 | 2.0" BSP | 12.0 | 3.0 | | | 2-M14 x 135 | 2.63 | 3-M14 x 135 | 3.51 | 3-M14 x 135 | 4.02 | 4-M14 x 135 | 5.37 | | |
| 200 - 210 | 219 | 234 | 2.0" BSP | 12.0 | 3.0 | | | 2-M14 x 135 | 2.88 | 3-M14 x 135 | 3.83 | 3-M14 x 135 | 4.40 | 4-M14 x 135 | 5.88 | | |
| 215 - 225 | 227 | 249 | 2.0" BSP | 12.0 | 3.0 | | | 2-M14 x 135 | 3.00 | 3-M14 x 135 | 3.98 | 3-M14 x 135 | 4.59 | 4-M14 x 135 | 6.12 | 5-M14 x 135 | 7.71 |
| 219 - 229 | 229 | 253 | 2.0" BSP | 12.0 | 3.0 | | | 2-M14 x 135 | 3.03 | 3-M14 x 135 | 4.02 | 3-M14 x 135 | 4.64 | 4-M14 x 135 | 6.19 | 5-M14 x 135 | 7.79 |
| 230 - 240 | 239 | 264 | 2.0" BSP | 10.0 | 2.5 | | | | | 3-M14 x 135 | 4.13 | 3-M14 x 135 | 4.77 | 4-M14 x 135 | 6.37 | 5-M14 x 135 | 8.02 |
| 237 - 247 | 246 | 271 | 2.0" BSP | 10.0 | 2.5 | | | | | 3-M14 x 135 | 4.21 | 3-M14 x 135 | 4.86 | 4-M14 x 135 | 6.48 | 5-M14 x 135 | 8.16 |
| 240 - 250 | 249 | 274 | 2.0" BSP | 10.0 | 2.5 | | | | | 3-M14 x 135 | 4.23 | 3-M14 x 135 | 4.89 | 4-M14 x 135 | 6.53 | 5-M14 x 135 | 8.22 |
| 250 - 260 | 259 | 284 | 2.0" BSP | 10.0 | 2.5 | | | | | 3-M14 x 135 | 4.33 | 3-M14 x 135 | 5.01 | 4-M14 x 135 | 6.69 | 5-M14 x 135 | 8.42 |
| 257 - 267 | 266 | 291 | 2.0" BSP | 10.0 | 2.5 | | | | | 3-M14 x 135 | 4.41 | 3-M14 x 135 | 5.10 | 4-M14 x 135 | 6.80 | 5-M14 x 135 | 8.56 |
| 261 - 271 | 270 | 295 | 2.0" BSP | 10.0 | 2.5 | | | | | 3-M14 x 135 | 4.45 | 3-M14 x 135 | 5.15 | 4-M14 x 135 | 6.87 | 5-M14 x 135 | 8.64 |
| 270 - 280 | 279 | 304 | 2.0" BSP | 10.0 | 2.5 | | | | | 3-M14 x 135 | 4.54 | 3-M14 x 135 | 5.26 | 4-M14 x 135 | 7.02 | 5-M14 x 135 | 8.83 |
| 280 - 291 | 289 | 314 | 2.0" BSP | 10.0 | 2.5 | | | | | 3-M14 x 135 | 4.64 | 3-M14 x 135 | 5.38 | 4-M14 x 135 | 7.18 | 5-M14 x 135 | 9.03 |
| 290 - 300 | 299 | 324 | 2.0" BSP | 6.0 | 1.5 | | | | | 3-M14 x 135 | 4.74 | 3-M14 x 135 | 5.50 | 4-M14 x 135 | 7.34 | 5-M14 x 135 | 9.23 |
| 300 - 310 | 308 | 333 | 2.0" BSP | 6.0 | 1.5 | | | | | 3-M14 x 135 | 4.84 | 3-M14 x 135 | 5.62 | 4-M14 x 135 | 7.50 | 5-M14 x 135 | 9.43 |
| 310 - 320 | 319 | 343 | 2.0" BSP | 6.0 | 1.5 | | | | | 3-M14 x 135 | 4.94 | 3-M14 x 135 | 5.74 | 4-M14 x 135 | 7.67 | 5-M14 x 135 | 9.64 |
| 315 - 325 | 328 | 349 | 2.0" BSP | 6.0 | 1.5 | | | | | 3-M14 x 135 | 5.00 | 3-M14 x 135 | 5.81 | 4-M14 x 135 | 7.75 | 5-M14 x 135 | 9.74 |
| 320 - 330 | 329 | 354 | 2.0" BSP | 6.0 | 1.5 | | | | | 3-M14 x 135 | 5.04 | 3-M14 x 135 | 5.86 | 4-M14 x 135 | 7.83 | 5-M14 x 135 | 9.84 |
| 330 - 340 | 339 | 364 | 2.0" BSP | 6.0 | 1.5 | | | | | 3-M14 x 135 | 5.15 | 3-M14 x 135 | 5.99 | 4-M14 x 135 | 7.99 | 5-M14 x 135 | 10.04 |
| 340 - 350 | 349 | 374 | 2.0" BSP | 6.0 | 1.5 | | | | | 3-M14 x 135 | 5.25 | 3-M14 x 135 | 6.11 | 4-M14 x 135 | 8.15 | 5-M14 x 135 | 10.24 |
| 350 - 360 | 359 | 384 | 2.0" BSP | 6.0 | 1.5 | | | | | 3-M14 x 135 | 5.35 | 3-M14 x 135 | 6.23 | 4-M14 x 135 | 8.32 | 5-M14 x 135 | 10.45 |

*This is the maximum size BSP outlet offered. Smaller outlets are available: 0.75", 1.0", 1.25", 1.5", 1.75", 2.0".**The rated working pressures quoted above for water applications are based on worst case scenarios including circumferential cracks. When used to repair pipelines with less severe damage and dependant on the pipe surface, higher working pressures may be achieved.***When using HandiRange products on PE pipe, consideration to clamp length must be given, please contact the Viking Johnson Marketing Department for more details.

Every effort has been made to ensure that the information contained in this publication is accurate at the time of publishing. Crane Ltd assumes no responsibility or liability for typographical errors or omissions or for any misinterpretation of the information within the publication and reserves the right to change without notice.

HandiClamp & HandiTap Single Band

Datasheet

2/2

Technical Information

Working Pressure Rating

- ▶ Water = In accordance the rating as defined in the tables
- ▶ Gas = In accordance the rating as defined in the tables

Vacuum Pressure

Capable of accommodating a vacuum pressure of -0.7 bar.

Site Test Pressure

1.5 times working pressure for short duration (2 hours)

Angularity

HandiClamp & HandiTap fittings are not able to accommodate any angularity.

Bolt Torque/Spanner

- ▶ M12; Torque = 55-65Nm on every bolt
- ▶ M14; Torque = 70-80 Nm on every bolt
- ▶ M16; Torque = 95-110Nm on every bolt

Temperature Rating of Product

- ▶ EPDM = -20°C to +40°C
- ▶ Nitrile = 20°C to +40°C

Note: HandiClamp & HandiTap are not suitable for use on heating systems with fluctuating temperatures

End Load Due to Internal Pressure

HandiClamp & HandiTap fittings DO NOT resist end load due to the internal pressure - adequate external restraint must be provided to prevent pipe pull out from the clamp.

Approvals

The following water contact materials used in HandiClamp are approved for use with potable water:-

EPDM Gaskets:

- ▶ WRAS

In addition to the above, HandiClamp & HandiTap range as a finished product has KIWA certification verifying that the above products comply with the requirements of the Water Supply (Water Fittings) Regulations for England and Wales 1999, the Water Byelaws 2000, Scotland and the Water Regulations Northern Ireland.

Materials & Relevant Standards

Body & Plates

Shell, channel plate, bridging plate, lug plate & nut plate
Stainless Steel to BS1449:Part 2 GRADE 304S15

Gasket

- ▶ EPDM to BS EN681-1, TYPE WA, WC 60 IRHD
- ▶ Nitrile to BS EN682, Type G 60 IRHD

Studs

Stainless Steel to BS EN ISO3506-1
GRADE A2 Property Class 50

Nuts

Stainless Steel to BS EN ISO 3506-2
GRADE A4 Property Class 80

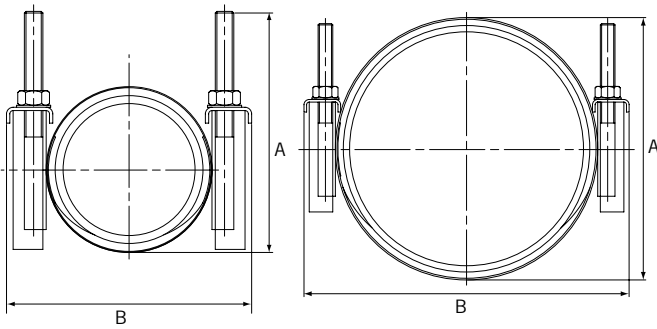
Washers

Stainless Steel BS1449:PART 2 GRADE 304S15

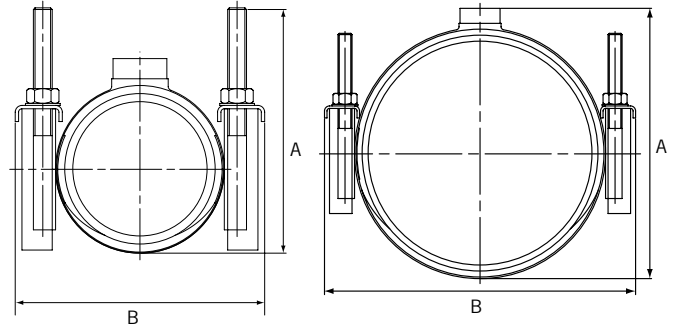
HandiClamp & HandiTap Double Band

Datasheet 1/2

HandiClamp Double Band



HandiTap Double Band



HandiClamp & HandiTap Double Band

| OD Range (mm) | A (mm) | B (mm) | Max Outlet Size* | Working Pressure (bar)** | | Clamp Length*** | | | | | | | |
|---------------|--------|--------|------------------|--------------------------|------|------------------|-------------|------------------|-------------|------------------|-------------|------------------|-------------|
| | | | | | | 200 (mm) | | 250 (mm) | | 300 (mm) | | 400 (mm) | |
| | | | | | | Bolt Details | | Bolt Details | | Bolt Details | | Bolt Details | |
| | | | | | | No.-Dia x Length | Weight (kg) | No.-Dia x Length | Weight (kg) | No.-Dia x Length | Weight (kg) | No.-Dia x Length | Weight (kg) |
| 88 - 110 | 163 | 122 | 1.0" BSP | 20.0 | 4.0 | 4-M12 x 135 | 2.50 | 6-M12 x 135 | 3.76 | 6-M12 x 135 | 4.14 | 8-M12 x 135 | 5.69 |
| 108 - 128 | 173 | 142 | 1.5" BSP | 20.0 | 4.0 | 4-M12 x 135 | 2.67 | 6-M12 x 135 | 3.97 | 6-M12 x 135 | 4.40 | 8-M12 x 135 | 6.03 |
| 113 - 133 | 176 | 147 | 1.5" BSP | 20.0 | 4.0 | 4-M14 x 135 | 2.77 | 6-M14 x 135 | 4.09 | 6-M14 x 135 | 4.54 | 8-M14 x 135 | 6.22 |
| 120 - 140 | 179 | 154 | 1.5" BSP | 12.0 | 3.0 | 4-M14 x 135 | 2.81 | 6-M14 x 135 | 4.15 | 6-M14 x 135 | 4.61 | 8-M14 x 135 | 6.31 |
| 130 - 150 | 184 | 164 | 1.5" BSP | 12.0 | 3.0 | 4-M14 x 135 | 2.88 | 6-M14 x 135 | 4.24 | 6-M14 x 135 | 4.72 | 8-M14 x 135 | 6.46 |
| 140 - 160 | 189 | 173 | 2.0" BSP | 12.0 | 3.0 | 4-M14 x 135 | 2.95 | 6-M14 x 135 | 4.33 | 6-M14 x 135 | 4.82 | 8-M14 x 135 | 6.59 |
| 150 - 170 | 194 | 184 | 2.0" BSP | 12.0 | 3.0 | 4-M14 x 135 | 3.07 | 6-M14 x 135 | 4.47 | 6-M14 x 135 | 4.99 | 8-M14 x 135 | 6.82 |
| 159 - 180 | 199 | 192 | 2.0" BSP | 12.0 | 3.0 | 4-M14 x 135 | 3.13 | 6-M14 x 135 | 4.55 | 6-M14 x 135 | 5.09 | 8-M14 x 135 | 6.95 |
| 168 - 189 | 203 | 201 | 2.0" BSP | 12.0 | 3.0 | 4-M14 x 135 | 3.19 | 6-M14 x 135 | 4.63 | 6-M14 x 135 | 5.18 | 8-M14 x 135 | 7.07 |
| 170 - 190 | 204 | 204 | 2.0" BSP | 12.0 | 3.0 | 4-M14 x 135 | 3.21 | 6-M14 x 135 | 4.65 | 6-M14 x 135 | 5.21 | 8-M14 x 135 | 7.11 |
| 175 - 195 | 207 | 208 | 2.0" BSP | 12.0 | 3.0 | 4-M14 x 135 | 3.24 | 6-M14 x 135 | 4.69 | 6-M14 x 135 | 5.26 | 8-M14 x 135 | 7.17 |
| 190 - 210 | 214 | 224 | 2.0" BSP | 12.0 | 3.0 | 4-M14 x 135 | 3.35 | 6-M14 x 135 | 4.82 | 6-M14 x 135 | 5.42 | 8-M14 x 135 | 7.39 |
| 205 - 225 | 222 | 239 | 2.0" BSP | 12.0 | 3.0 | 4-M14 x 135 | 3.67 | 6-M14 x 135 | 5.22 | 6-M14 x 135 | 5.90 | 8-M14 x 135 | 8.03 |
| 210 - 230 | 224 | 243 | 2.0" BSP | 12.0 | 3.0 | 4-M14 x 135 | 3.71 | 6-M14 x 135 | 5.27 | 6-M14 x 135 | 5.95 | 8-M14 x 135 | 8.10 |
| 216 - 238 | 227 | 250 | 2.0" BSP | 12.0 | 3.0 | 4-M14 x 135 | 3.76 | 6-M14 x 135 | 5.33 | 6-M14 x 135 | 6.03 | 8-M14 x 135 | 8.20 |
| 220 - 242 | 229 | 254 | 2.0" BSP | 10.0 | 2.5 | 4-M14 x 135 | 3.79 | 6-M14 x 135 | 5.37 | 6-M14 x 135 | 6.08 | 8-M14 x 135 | 8.27 |
| 240 - 260 | 248 | 273 | 2.0" BSP | 10.0 | 2.5 | 4-M14 x 135 | 3.95 | 6-M14 x 135 | 5.57 | 6-M14 x 135 | 6.32 | 8-M14 x 135 | 8.59 |
| 243 - 263 | 252 | 277 | 2.0" BSP | 10.0 | 2.5 | 4-M14 x 135 | 3.98 | 6-M14 x 135 | 5.60 | 6-M14 x 135 | 6.36 | 8-M14 x 135 | 8.64 |
| 255 - 275 | 264 | 289 | 2.0" BSP | 10.0 | 2.5 | 4-M14 x 135 | 4.07 | 6-M14 x 135 | 5.73 | 6-M14 x 135 | 6.65 | 8-M14 x 135 | 8.83 |
| 272 - 292 | 280 | 306 | 2.0" BSP | 10.0 | 2.5 | 4-M14 x 135 | 4.21 | 6-M14 x 135 | 5.90 | 6-M14 x 135 | 6.71 | 8-M14 x 135 | 9.11 |
| 282 - 302 | 290 | 315 | 2.0" BSP | 6.0 | 1.5 | 4-M14 x 135 | 4.29 | 6-M14 x 135 | 6.00 | 6-M14 x 135 | 6.83 | 8-M14 x 135 | 9.27 |
| 295 - 315 | 304 | 329 | 2.0" BSP | 6.0 | 1.5 | 4-M14 x 135 | 4.40 | 6-M14 x 135 | 6.13 | 6-M14 x 135 | 6.99 | 8-M14 x 135 | 9.48 |
| 307 - 327 | 316 | 341 | 2.0" BSP | 6.0 | 1.5 | 4-M14 x 135 | 4.50 | 6-M14 x 135 | 6.25 | 6-M14 x 135 | 7.14 | 8-M14 x 135 | 9.68 |
| 315 - 335 | 323 | 348 | 2.0" BSP | 6.0 | 1.5 | 4-M14 x 135 | 4.56 | 6-M14 x 135 | 6.33 | 6-M14 x 135 | 7.23 | 8-M14 x 135 | 9.80 |
| 319 - 339 | 328 | 353 | 2.0" BSP | 6.0 | 1.5 | 4-M14 x 135 | 4.59 | 6-M14 x 135 | 6.38 | 6-M14 x 135 | 7.28 | 8-M14 x 135 | 9.88 |
| 322 - 344 | 330 | 355 | 2.0" BSP | 6.0 | 1.5 | 4-M14 x 135 | 4.62 | 6-M14 x 135 | 6.40 | 6-M14 x 135 | 7.32 | 8-M14 x 135 | 9.92 |
| 333 - 353 | 342 | 367 | 2.0" BSP | 6.0 | 1.5 | | | 6-M14 x 135 | 6.52 | 6-M14 x 135 | 7.45 | 8-M14 x 135 | 10.10 |
| 341 - 361 | 350 | 375 | 2.0" BSP | 6.0 | 1.5 | | | 6-M14 x 135 | 6.60 | 6-M14 x 135 | 7.55 | 8-M14 x 135 | 10.23 |
| 365 - 385 | 374 | 399 | 2.0" BSP | 5.0 | 1.25 | | | 6-M14 x 135 | 6.84 | 6-M14 x 135 | 7.84 | 8-M14 x 135 | 10.62 |
| 396 - 416 | 405 | 430 | 2.0" BSP | 5.0 | 1.25 | | | 6-M14 x 135 | 7.16 | 6-M14 x 135 | 8.22 | 8-M14 x 135 | 11.13 |
| 410 - 430 | 419 | 444 | 2.0" BSP | 4.9 | 1.22 | | | 6-M14 x 135 | 7.30 | 6-M14 x 135 | 8.39 | 8-M14 x 135 | 11.35 |

*This is the maximum size BSP outlet offered. Smaller outlets are available: 0.75", 1.0", 1.25", 1.5", 1.75", 2.0". **The rated working pressures quoted above for water applications are based on worst case scenarios including circumferential cracks. When used to repair pipelines with less severe damage and dependant on the pipe surface, higher working pressures may be achieved. ***When using HandiRange products on PE pipe, consideration to clamp length must be given, please contact the Viking Johnson Marketing Department for more details.

Every effort has been made to ensure that the information contained in this publication is accurate at the time of publishing. Crane Ltd assumes no responsibility or liability for typographical errors or omissions or for any misinterpretation of the information within the publication and reserves the right to change without notice.

HandiClamp & HandiTap Double Band

Datasheet

2/2

Technical Information

Working Pressure Rating

- ▶ Water = In accordance the rating as defined in the tables
- ▶ Gas = In accordance the rating as defined in the tables

Vacuum Pressure

Capable of accommodating a vacuum pressure of -0.7 bar.

Site Test Pressure

1.5 times working pressure for short duration (2 hours)

Angularity

HandiClamp & HandiTap fittings are not able to accommodate any angularity.

Bolt Torque/Spanner

- ▶ M12; Torque = 55-65Nm on every bolt
- ▶ M14; Torque = 70-80 Nm on every bolt
- ▶ M16; Torque = 95-110Nm on every bolt

Temperature Rating of Product

- ▶ EPDM = -20°C to +40°C
- ▶ Nitrile = 20°C to +40°C

Note: HandiClamp & HandiTap are not suitable for use on heating systems with fluctuating temperatures

End Load Due to Internal Pressure

HandiClamp & HandiTap fittings DO NOT resist end load due to the internal pressure - adequate external restraint must be provided to prevent pipe pull out from the clamp.

Approvals

The following water contact materials used in HandiClamp are approved for use with potable water:-

EPDM Gaskets:

- ▶ WRAS

In addition to the above, HandiClamp & HandiTap range as a finished product has KIWA certification verifying that the above products comply with the requirements of the Water Supply (Water Fittings) Regulations for England and Wales 1999, the Water Byelaws 2000, Scotland and the Water Regulations Northern Ireland.

Materials & Relevant Standards

Body & Plates

Shell, channel plate, bridging plate, lug plate & nut plate
Stainless Steel to BS1449:Part 2 GRADE 304S15

Gasket

- ▶ EPDM to BS EN681-1, TYPE WA, WC 60 IRHD
- ▶ Nitrile to BS EN682, Type G 60 IRHD

Studs

Stainless Steel to BS EN ISO3506-1
GRADE A2 Property Class 50

Nuts

Stainless Steel to BS EN ISO 3506-2
GRADE A4 Property Class 80

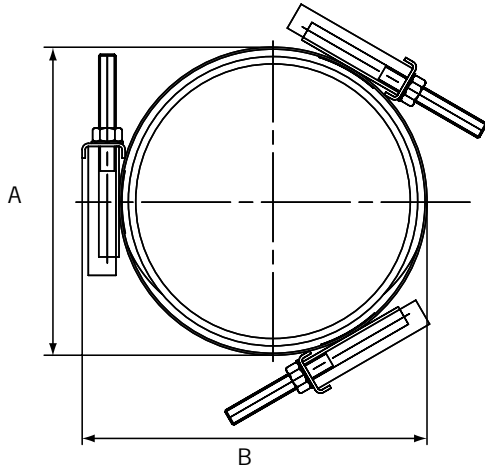
Washers

Stainless Steel BS1449:PART 2 GRADE 304S15

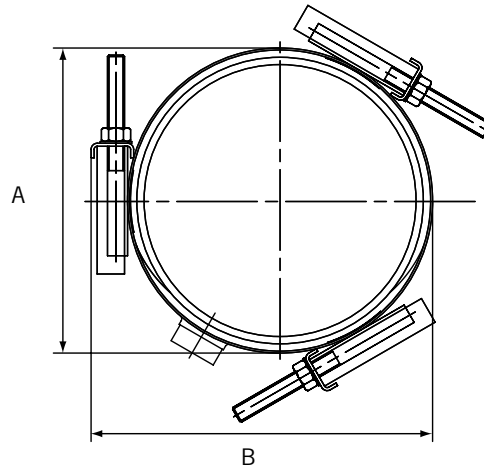
HandiClamp & HandiTap Triple Band

Datasheet 1/2

HandiClamp Triple Band



HandiTap Triple Band



HandiClamp & HandiTap Triple Band

| OD Range (mm) | A (mm) | B (mm) | Max Outlet Size* | Working** pressure (bar) | | Clamp Length*** | | | | | | | |
|---------------|--------|--------|------------------|--------------------------|-----|-----------------|-------|--------------|------------------|--------------|------------------|----------------|------------------|
| | | | | | | 300 (mm) | | 400 (mm) | | 500 (mm) | | 600 (mm) | |
| | | | | | | Bolt Details | | Bolt Details | | Bolt Details | | Bolt Details | |
| | | | | | | BSP | Water | Gas | No.-Dia x Length | Weight (kg) | No.-Dia x Length | Weight (kg) | No.-Dia x Length |
| 270 - 300 | 279 | 303 | 2.0" BSP | 7.4 | 1.9 | 9-M14 x 135 | 9.23 | 12-M14 x 135 | 12.34 | 15-M14 x 135 | 15.58 | 18 - M14 x 135 | 17.95 |
| 310 - 340 | 319 | 344 | 2.0" BSP | 6.5 | 1.6 | 9-M14 x 135 | 9.72 | 12-M14 x 135 | 12.99 | 15-M14 x 135 | 16.40 | 18 - M14 x 135 | 18.93 |
| 335 - 365 | 344 | 369 | 2.0" BSP | 6.0 | 1.5 | 9-M14 x 135 | 10.02 | 12-M14 x 135 | 13.39 | 15-M14 x 135 | 16.90 | 18 - M14 x 135 | 19.53 |
| 340 - 370 | 349 | 374 | 2.0" BSP | 6.0 | 1.5 | 9-M14 x 135 | 10.08 | 12-M14 x 135 | 13.47 | 15-M14 x 135 | 17.00 | 18 - M14 x 135 | 19.65 |
| 360 - 390 | 369 | 394 | 2.0" BSP | 5.6 | 1.4 | 9-M14 x 135 | 10.33 | 12-M14 x 135 | 13.79 | 15-M14 x 135 | 17.40 | 18 - M14 x 135 | 20.14 |
| 385 - 415 | 393 | 418 | 2.0" BSP | 5.2 | 1.3 | 9-M14 x 135 | 10.63 | 12-M14 x 135 | 14.19 | 15-M14 x 135 | 17.91 | 18 - M14 x 135 | 20.74 |
| 395 - 425 | 404 | 429 | 2.0" BSP | 5.1 | 1.3 | 9-M14 x 135 | 10.75 | 12-M14 x 135 | 14.36 | 15-M14 x 135 | 18.12 | 18 - M14 x 135 | 21.00 |
| 410 - 440 | 418 | 443 | 2.0" BSP | 4.9 | 1.2 | 9-M14 x 135 | 10.93 | 12-M14 x 135 | 14.60 | 15-M14 x 135 | 18.41 | 18 - M14 x 135 | 21.35 |
| 420 - 450 | 429 | 454 | 2.0" BSP | 4.8 | 1.2 | 9-M14 x 135 | 11.06 | 12-M14 x 135 | 14.77 | 15-M14 x 135 | 18.62 | 18 - M14 x 135 | 21.60 |
| 435 - 465 | 444 | 469 | 2.0" BSP | 4.6 | 1.1 | 9-M14 x 135 | 11.24 | 12-M14 x 135 | 15.01 | 15-M14 x 135 | 18.93 | 18 - M14 x 135 | 21.97 |
| 440 - 470 | 449 | 474 | 2.0" BSP | 4.5 | 1.1 | 9-M14 x 135 | 11.30 | 12-M14 x 135 | 15.09 | 15-M14 x 135 | 19.03 | 18 - M14 x 135 | 22.09 |
| 450 - 480 | 458 | 483 | 2.0" BSP | 4.4 | 1.1 | 9-M14 x 135 | 11.42 | 12-M14 x 135 | 15.25 | 15-M14 x 135 | 19.22 | 18 - M14 x 135 | 22.32 |
| 475 - 505 | 483 | 508 | 2.0" BSP | 4.2 | 1.1 | 9-M16 x 135 | 13.89 | 12-M16 x 135 | 18.55 | 15-M16 x 135 | 23.35 | 18 - M16 x 135 | 27.27 |
| 485 - 515 | 494 | 519 | 2.0" BSP | 4.1 | 1.0 | 9-M16 x 135 | 14.06 | 12-M16 x 135 | 18.77 | 15-M16 x 135 | 23.62 | 18 - M16 x 135 | 27.60 |
| 505 - 535 | 514 | 539 | 2.0" BSP | 4.0 | 1.0 | 9-M16 x 135 | 14.38 | 12-M16 x 135 | 19.19 | 15-M16 x 135 | 24.15 | 18 - M16 x 135 | 28.24 |
| 510 - 540 | 519 | 544 | 2.0" BSP | 3.9 | 1.0 | 9-M16 x 135 | 14.45 | 12-M16 x 135 | 19.29 | 15-M16 x 135 | 24.28 | 18 - M16 x 135 | 28.39 |
| 520 - 550 | 529 | 554 | 2.0" BSP | 3.8 | 1.0 | 9-M16 x 135 | 14.62 | 12-M16 x 135 | 19.51 | 15-M16 x 135 | 24.56 | 18 - M16 x 135 | 28.72 |
| 530 - 560 | 539 | 564 | 2.0" BSP | 3.8 | 0.9 | 9-M16 x 135 | 14.77 | 12-M16 x 135 | 19.72 | 15-M16 x 135 | 24.81 | 18 - M16 x 135 | 29.02 |
| 535 - 565 | 543 | 568 | 2.0" BSP | 3.7 | 0.9 | 9-M16 x 135 | 14.84 | 12-M16 x 135 | 19.82 | 15-M16 x 135 | 24.94 | 18 - M16 x 135 | 29.18 |
| 560 - 590 | 568 | 593 | 2.0" BSP | 3.6 | 0.9 | 9-M16 x 135 | 15.24 | 12-M16 x 135 | 20.34 | 15-M16 x 135 | 25.59 | 18 - M16 x 135 | 29.96 |
| 570 - 600 | 579 | 604 | 2.0" BSP | 3.5 | 0.9 | 9-M16 x 135 | 15.40 | 12-M16 x 135 | 20.56 | 15-M16 x 135 | 25.87 | 18 - M16 x 135 | 30.30 |
| 585 - 615 | 594 | 619 | 2.0" BSP | 3.4 | 0.9 | 9-M16 x 135 | 15.65 | 12-M16 x 135 | 20.89 | 15-M16 x 135 | 26.27 | 18 - M16 x 135 | 30.78 |
| 610 - 640 | 619 | 644 | 2.0" BSP | 3.3 | 0.8 | 9-M16 x 135 | 16.04 | 12-M16 x 135 | 21.41 | 15-M16 x 135 | 26.93 | 18 - M16 x 135 | 31.57 |
| 640 - 670 | 648 | 673 | 2.0" BSP | 3.1 | 0.8 | 9-M16 x 135 | 16.51 | 12-M16 x 135 | 22.03 | 15-M16 x 135 | 27.71 | 18 - M16 x 135 | 32.50 |
| 670 - 700 | 679 | 704 | 2.0" BSP | 3.0 | 0.7 | 9-M16 x 135 | 16.99 | 12-M16 x 135 | 22.68 | 15-M16 x 135 | 28.51 | 18 - M16 x 135 | 33.47 |
| 680 - 710 | 689 | 714 | 2.0" BSP | 2.9 | 0.7 | 9-M16 x 135 | 17.14 | 12-M16 x 135 | 22.88 | 15-M16 x 135 | 28.77 | 18 - M16 x 135 | 33.77 |

*This is the maximum size BSP outlet offered. Smaller outlets are available: 0.75", 1.0", 1.25", 1.5", 1.75", 2.0". **The rated working pressures quoted above for water applications are based on worst case scenarios including circumferential cracks. When used to repair pipelines with less severe damage and dependant on the pipe surface, higher working pressures may be achieved. ***When using HandiRange products on PE pipe, consideration to clamp length must be given, please contact the Viking Johnson Marketing Department for more details.

Every effort has been made to ensure that the information contained in this publication is accurate at the time of publishing. Crane Ltd assumes no responsibility or liability for typographical errors or omissions or for any misinterpretation of the information within the publication and reserves the right to change without notice.

DR11623_01_10_2024_(ISSUE-8)_GB

HandiClamp & HandiTap Triple Band

Datasheet

2/2

Technical Information

Working Pressure Rating

- ▶ Water = In accordance the rating as defined in the tables
- ▶ Gas = In accordance the rating as defined in the tables

Vacuum Pressure

Capable of accommodating a vacuum pressure of -0.7 bar.

Site Test Pressure

1.5 times working pressure for short duration (2 hours)

Angularity

HandiClamp & HandiTap fittings are not able to accommodate any angularity.

Bolt Torque/Spanner

- ▶ M12; Torque = 55-65Nm on every bolt
- ▶ M14; Torque = 70-80 Nm on every bolt
- ▶ M16; Torque = 95-110Nm on every bolt

Temperature Rating of Product

- ▶ EPDM = -20°C to +40°C
- ▶ Nitrile = 20°C to +40°C

Note: HandiClamp & HandiTap are not suitable for use on heating systems with fluctuating temperatures

End Load Due to Internal Pressure

HandiClamp & HandiTap fittings DO NOT resist end load due to the internal pressure - adequate external restraint must be provided to prevent pipe pull out from the clamp.

Approvals

The following water contact materials used in HandiClamp are approved for use with potable water:-

EPDM Gaskets:

- ▶ WRAS

In addition to the above, HandiClamp & HandiTap range as a finished product has KIWA certification verifying that the above products comply with the requirements of the Water Supply (Water Fittings) Regulations for England and Wales 1999, the Water Byelaws 2000, Scotland and the Water Regulations Northern Ireland.

Materials & Relevant Standards

Body & Plates

Shell, channel plate, bridging plate, lug plate & nut plate
Stainless Steel to BS1449:Part 2 GRADE 304S15

Gasket

- ▶ EPDM to BS EN681-1, TYPE WA, WC 60 IRHD
- ▶ Nitrile to BS EN682, Type G 60 IRHD

Studs

Stainless Steel to BS EN ISO3506-1
GRADE A2 Property Class 50

Nuts

Stainless Steel to BS EN ISO 3506-2
GRADE A4 Property Class 80

Washers

Stainless Steel BS1449:PART 2 GRADE 304S15

Every effort has been made to ensure that the information contained in this publication is accurate at the time of publishing. Crane Ltd assumes no responsibility or liability for typographical errors or omissions or for any misinterpretation of the information within the publication and reserves the right to change without notice.

DR11623_01_10_2024_(ISSUE-9)_GB

HandiBand

Datasheet

1/1

3" = 1 Bolt

6" = 2 Bolts

HandiBand

| Nom Dia | OD Range | Working Pressure (bar) | | Clamp Length |
|---------|-------------|------------------------|-----|--------------|
| | | Water | Gas | |
| 0.50" | 15.0 - 22.0 | 7.0 | 1.8 | 3" (75mm) |
| 0.50" | 15.0 - 22.0 | 7.0 | 1.8 | 6" (150mm) |
| 0.75" | 26.0 - 30.0 | 7.0 | 1.8 | 3" (75mm) |
| 0.75" | 26.0 - 30.0 | 7.0 | 1.8 | 6" (150mm) |
| 1.00" | 33.0 - 37.0 | 7.0 | 1.8 | 3" (75mm) |
| 1.00" | 33.0 - 37.0 | 7.0 | 1.8 | 6" (150mm) |
| 1.25" | 42.0 - 45.0 | 7.0 | 1.8 | 3" (75mm) |
| 1.25" | 42.0 - 45.0 | 7.0 | 1.8 | 6" (150mm) |
| 1.50" | 48.0 - 54.0 | 7.0 | 1.8 | 3" (75mm) |
| 1.50" | 48.0 - 54.0 | 7.0 | 1.8 | 6" (150mm) |
| 2.00" | 60.0 - 64.0 | 7.0 | 1.8 | 3" (75mm) |
| 2.00" | 60.0 - 64.0 | 7.0 | 1.8 | 6" (150mm) |



Technical Information

Pressure Rating

- ▶ Water = In accordance the rating as defined in the tables
- ▶ Gas = In accordance the rating as defined in the tables

Vacuum Pressure

Capable of accommodating a vacuum pressure of -0.7 bar.

Site Test Pressure

1.5 times working pressure for short duration (2 hours).

Angularity

HandiBand fittings are not able to accommodate any angularity.

Temperature Rating of Product

- ▶ EPDM = -20°C to +40°C
- ▶ Nitrile = 20°C to +40°C

NOTE: HandiBand is not suitable for use on heating systems with fluctuating temperatures

End Load Due to Internal Pressure

HandiBand fittings DO NOT resist end load due to the internal pressure - adequate external restraint must be provided to prevent pipe pull out from the clamp.

Materials & Relevant Standards

Shell

Stainless Steel to BS1449:Part2 Grade 304 / Steel No. 1.4301

Lugs

Whitehart malleable cast iron equivalent to BS EN 1562 Grade ENGJMW-400-5

Studs/Nuts

Mild steel to BS EN ISO 898-1 Property class 4.6

Gasket

- ▶ EPDM to BS EN681-1, TYPE WA, WC 60 IRHD
- ▶ Nitrile to BS EN682, Type G 60 IRHD

Every effort has been made to ensure that the information contained in this publication is accurate at the time of publishing. Crane Ltd assumes no responsibility or liability for typographical errors or omissions or for any misinterpretation of the information within the publication and reserves the right to change without notice.

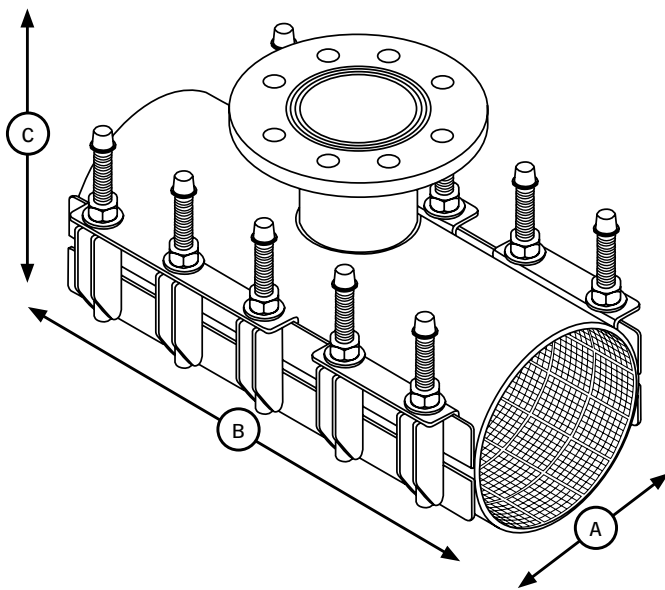
DR11623_01_10_2024_(ISSUE-8)_GB



HandiRange - The pipe repair product that seals first time even on badly corroded pipes.

HandiTee DN80 to DN250 Clamp Length 300 to 500mm

HandiTee



HandiTee Under Pressure Tapping Tee

| DN (mm) | OD Range (mm) | Working Pressure | | Length of Clamp (mm) | | | | | | | | | | | |
|---------|---------------|------------------|------|----------------------------------|--------|--------|--------|----------------------------------|--------|--------|--------|----------------------------------|--------|--------|--------|
| | | | | 300 | | | 400 | | | 500 | | | | | |
| | | | | Max Flange Nom & Flange Drilling | A (mm) | B (mm) | C (mm) | Max Flange Nom & Flange Drilling | A (mm) | B (mm) | C (mm) | Max Flange Nom & Flange Drilling | A (mm) | B (mm) | C (mm) |
| 80 | 88-110 | 4.0 | 16.0 | DN65 PN10/16 | 140 | 300 | 260 | DN65 PN10/16 | 140 | 400 | 260 | DN65 PN10/16 | 140 | 500 | 260 |
| 80 | 100-120 | 4.0 | 16.0 | DN65 PN10/16 | 140 | 300 | 260 | DN80 PN10/16 | 140 | 400 | 260 | DN80 PN10/16 | 140 | 500 | 260 |
| 100 | 108-128 | 3.0 | 12.0 | DN65 PN10/16 | 160 | 300 | 280 | DN80 PN10/16 | 160 | 400 | 280 | DN80 PN10/16 | 160 | 500 | 280 |
| 100 | 114-134 | 3.0 | 12.0 | DN65 PN10/16 | 160 | 300 | 280 | DN80 PN10/16 | 160 | 400 | 280 | DN80 PN10/16 | 160 | 500 | 280 |
| 100 | 120-140 | 3.0 | 12.0 | DN65 PN10/16 | 160 | 300 | 280 | DN80 PN10/16 | 160 | 400 | 280 | DN80 PN10/16 | 160 | 500 | 280 |
| 100 | 130-150 | 3.0 | 12.0 | DN65 PN10/16 | 160 | 300 | 280 | DN80 PN10/16 | 160 | 400 | 280 | DN100 PN10/16 | 160 | 500 | 280 |
| 125 | 133-155 | 3.0 | 12.0 | DN65 PN10/16 | 185 | 300 | 305 | DN100 PN10/16 | 185 | 400 | 305 | DN100 PN10/16 | 185 | 500 | 305 |
| 125 | 135-155 | 3.0 | 12.0 | DN65 PN10/16 | 185 | 300 | 305 | DN125 PN10/16 | 185 | 400 | 305 | DN125 PN10/16 | 185 | 500 | 305 |
| 125 | 140-160 | 3.0 | 12.0 | DN65 PN10/16 | 185 | 300 | 305 | DN125 PN10/16 | 185 | 400 | 305 | DN125 PN10/16 | 185 | 500 | 305 |
| 150 | 158-180 | 3.0 | 12.0 | DN65 PN10/16 | 210 | 300 | 330 | DN125 PN10/16 | 210 | 400 | 330 | DN125 PN10/16 | 210 | 500 | 330 |
| 150 | 165-185 | 3.0 | 12.0 | DN65 PN10/16 | 210 | 300 | 330 | DN125 PN10/16 | 210 | 400 | 330 | DN125 PN10/16 | 210 | 500 | 330 |
| 150 | 168-189 | 3.0 | 12.0 | DN65 PN10/16 | 210 | 300 | 330 | DN125 PN10/16 | 210 | 400 | 330 | DN125 PN10/16 | 210 | 500 | 330 |
| 150 | 170-190 | 3.0 | 12.0 | DN65 PN10/16 | 210 | 300 | 330 | DN150 PN10/16 | 210 | 400 | 330 | DN150 PN10/16 | 210 | 500 | 330 |
| 150 | 176-196 | 3.0 | 12.0 | DN65 PN10/16 | 210 | 300 | 330 | DN150 PN10/16 | 210 | 400 | 330 | DN150 PN10/16 | 210 | 500 | 330 |
| 150 | 180-200 | 3.0 | 12.0 | DN65 PN10/16 | 210 | 300 | 330 | DN150 PN10/16 | 210 | 400 | 330 | DN150 PN10/16 | 210 | 500 | 330 |
| 150 | 190-210 | 3.0 | 12.0 | DN65 PN10/16 | 210 | 300 | 330 | DN150 PN10/16 | 210 | 400 | 330 | DN150 PN10/16 | 210 | 500 | 330 |
| 150 | 195-217 | 3.0 | 12.0 | DN65 PN10/16 | 210 | 300 | 330 | DN150 PN10/16 | 210 | 400 | 330 | DN150 PN10/16 | 210 | 500 | 330 |
| 150 | 205-225 | 3.0 | 12.0 | DN65 PN10/16 | 210 | 300 | 330 | DN150 PN10/16 | 210 | 400 | 330 | DN150 PN10/16 | 210 | 500 | 330 |
| 200 | 210-230 | 3.0 | 12.0 | DN65 PN10/16 | 260 | 300 | 380 | DN150 PN10/16 | 260 | 400 | 380 | DN150 PN10/16 | 260 | 500 | 380 |
| 200 | 216-238 | 3.0 | 10.0 | DN65 PN10/16 | 260 | 300 | 380 | DN150 PN10/16 | 260 | 400 | 380 | DN150 PN10/16 | 260 | 500 | 380 |
| 200 | 225-246 | 3.0 | 10.0 | DN65 PN10/16 | 260 | 300 | 380 | DN150 PN10/16 | 260 | 400 | 380 | DN150 PN10/16 | 260 | 500 | 380 |
| 200 | 230-250 | 3.0 | 10.0 | DN65 PN10/16 | 260 | 300 | 380 | DN150 PN10/16 | 260 | 400 | 380 | DN150 PN10/16 | 260 | 500 | 380 |
| 225 | 240-260 | 3.0 | 10.0 | DN65 PN10/16 | 285 | 300 | 405 | DN150 PN10/16 | 285 | 400 | 405 | DN200 PN10 | 285 | 500 | 405 |
| 225 | 250-270 | 3.0 | 10.0 | DN65 PN10/16 | 285 | 300 | 405 | DN150 PN10/16 | 285 | 400 | 405 | DN200 PN10 | 285 | 500 | 405 |
| 250 | 260-280 | 3.0 | 10.0 | DN65 PN10/16 | 310 | 300 | 430 | DN150 PN10/16 | 310 | 400 | 430 | DN200 PN10 | 310 | 500 | 430 |
| 250 | 269-289 | 3.0 | 10.0 | DN65 PN10/16 | 310 | 300 | 430 | DN150 PN10/16 | 310 | 400 | 430 | DN200 PN10 | 310 | 500 | 430 |
| 250 | 273-293 | 3.0 | 10.0 | DN65 PN10/16 | 310 | 300 | 430 | DN150 PN10/16 | 310 | 400 | 430 | DN200 PN10 | 310 | 500 | 430 |
| 250 | 282-302 | 3.0 | 10.0 | DN65 PN10/16 | 310 | 300 | 430 | DN150 PN10/16 | 310 | 400 | 430 | DN200 PN10 | 310 | 500 | 430 |

Every effort has been made to ensure that the information contained in this publication is accurate at the time of publishing. Crane Ltd assumes no responsibility or liability for typographical errors or omissions or for any misinterpretation of the information within the publication and reserves the right to change without notice.

When using HandiRange products on PE pipe, consideration to clamp length must be given, please contact the Viking Johnson Marketing Department for more details.

HandiTee DN80 to DN250 Clamp Length 300 to 500mm

Datasheet

2/8

Technical Information

Pressure Rating

- ▶ Water = In accordance the rating as defined in the tables.
- ▶ Gas = In accordance the rating as defined in the tables.

Vacuum Pressure

Capable of accommodating a vacuum pressure of -0.7 bar.

Site Test Pressure

1.5 times working pressure for short duration (2 hours).

Angularity

HandiTee fittings are not able to accommodate any angularity.

Bolt Torque/Spanner

M16; Torque = 95-120Nm on every bolt

Temperature Rating of Product

- ▶ EPDM = -20°C to +40°C
- ▶ Nitrile = 20°C to +40°C

Note: HandiTee is not suitable for use on heating systems with fluctuating temperatures

End Load Due to Internal Pressure

HandiTee fittings DO NOT resist end load due to the internal pressure - adequate external restraint must be provided to prevent pipe pull out from the clamp.

Loads from Drilling Equipment and Valve / Branch Pipework

HandiTee is not designed to accommodate / resist the loads from the under pressure drilling equipment, which needs to be supported externally during the operation to drill into the main. In addition, the valve and branch pipework needs to be adequately supported to ensure none of the dead / live loads are imposed in the branch outlet in the HandiTee.

Approvals

The following water contact materials used in HandiTee are approved for use with potable water:-

- ▶ EPDM Gaskets; WRAS

Materials & Relevant Standards

Body & Plates

Shell, channel plate, bridging plate, lug plate & nut plate
Stainless Steel AISI 304 (A2)

Gasket

EPDM as standard, Nitrile option

Flange Outlets

Stainless Steel AISI 304, flanges according to DIN2576
varying from DN50 up to DN300

Bolts

Stainless Steel AISI 304 (A2); M16
(metric thread according DIN267),
thread is PTFE coated to prevent galling

Nuts

Stainless Steel AISI 304 (A2). M16 according DIN934

Washers

Stainless Steel BS1449:PART 2 GRADE 304S15

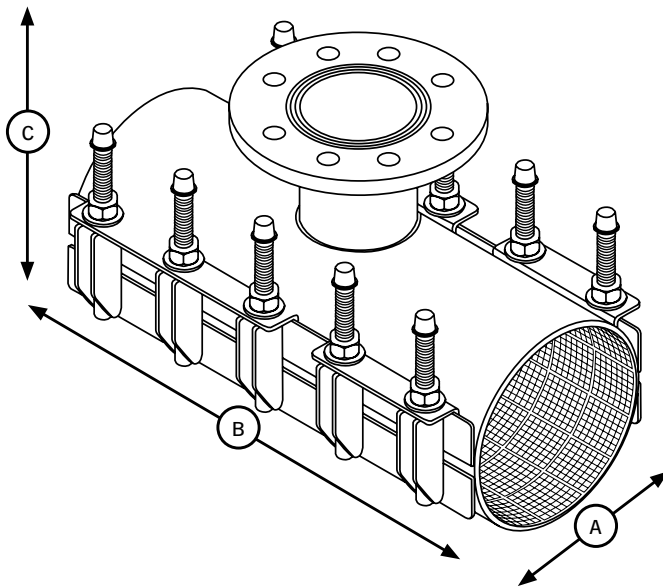
Every effort has been made to ensure that the information contained in this publication is accurate at the time of publishing. Crane Ltd assumes no responsibility or liability for typographical errors or omissions or for any misinterpretation of the information within the publication and reserves the right to change without notice.

When using HandiRange products on PE pipe, consideration to clamp length must be given, please contact the Viking Johnson Marketing Department for more details.

HandiTee DN80 to DN250 Clamp Length 600 to 1000mm

Datasheet 3/8

HandiTee



HandiTee Under Pressure Tapping Tee

| DN (mm) | OD Range (mm) | Working Pressure | | Length of Clamp (mm) | | | | | | | | | | | |
|---------|---------------|------------------|------|----------------------|-------------|----------------------------------|--------|---------------|---------------|----------------------------------|--------|--------|--------|----------------------------------|--------|
| | | | | 600 | | | | 800 | | | | 1000 | | | |
| | | | | Gas (bar) | Water (bar) | Max Flange Nom & Flange Drilling | A (mm) | B (mm) | C (mm) | Max Flange Nom & Flange Drilling | A (mm) | B (mm) | C (mm) | Max Flange Nom & Flange Drilling | A (mm) |
| 80 | 88-110 | 4.0 | 16.0 | DN65 PN10/16 | 140 | 600 | 260 | Not Available | Not Available | | | | | | |
| 80 | 100-120 | 4.0 | 16.0 | DN80 PN10/16 | 140 | 600 | 260 | | | | | | | | |
| 100 | 108-128 | 3.0 | 12.0 | DN80 PN10/16 | 160 | 600 | 280 | | | | | | | | |
| 100 | 114-134 | 3.0 | 12.0 | DN80 PN10/16 | 160 | 600 | 280 | | | | | | | | |
| 100 | 120-140 | 3.0 | 12.0 | DN80 PN10/16 | 160 | 600 | 280 | | | | | | | | |
| 100 | 130-150 | 3.0 | 12.0 | DN100 PN10/16 | 160 | 600 | 280 | | | | | | | | |
| 125 | 133-155 | 3.0 | 12.0 | DN100 PN10/16 | 185 | 600 | 305 | | | | | | | | |
| 125 | 135-155 | 3.0 | 12.0 | DN125 PN10/16 | 185 | 600 | 305 | | | | | | | | |
| 125 | 140-160 | 3.0 | 12.0 | DN125 PN10/16 | 185 | 600 | 305 | | | | | | | | |
| 150 | 158-180 | 3.0 | 12.0 | DN125 PN10/16 | 210 | 600 | 330 | | | | | | | | |
| 150 | 165-185 | 3.0 | 12.0 | DN125 PN10/16 | 210 | 600 | 330 | | | | | | | | |
| 150 | 168-189 | 3.0 | 12.0 | DN125 PN10/16 | 210 | 600 | 330 | | | | | | | | |
| 150 | 170-190 | 3.0 | 12.0 | DN150 PN10/16 | 210 | 600 | 330 | | | | | | | | |
| 150 | 176-196 | 3.0 | 12.0 | DN150 PN10/16 | 210 | 600 | 330 | | | | | | | | |
| 150 | 180-200 | 3.0 | 12.0 | DN150 PN10/16 | 210 | 600 | 330 | | | | | | | | |
| 150 | 190-210 | 3.0 | 12.0 | DN150 PN10/16 | 210 | 600 | 330 | | | | | | | | |
| 150 | 195-217 | 3.0 | 12.0 | DN150 PN10/16 | 210 | 600 | 330 | | | | | | | | |
| 150 | 205-225 | 3.0 | 12.0 | DN150 PN10/16 | 210 | 600 | 330 | | | | | | | | |
| 200 | 210-230 | 3.0 | 12.0 | DN150 PN10/16 | 260 | 600 | 380 | | | | | | | | |
| 200 | 216-238 | 3.0 | 10.0 | DN150 PN10/16 | 260 | 600 | 380 | | | | | | | | |
| 200 | 225-246 | 3.0 | 10.0 | DN150 PN10/16 | 260 | 600 | 380 | | | | | | | | |
| 200 | 230-250 | 3.0 | 10.0 | DN150 PN10/16 | 260 | 600 | 380 | | | | | | | | |
| 225 | 240-260 | 3.0 | 10.0 | DN200 PN10 | 285 | 600 | 405 | | | | | | | | |
| 225 | 250-270 | 3.0 | 10.0 | DN200 PN10 | 285 | 600 | 405 | | | | | | | | |
| 250 | 260-280 | 3.0 | 10.0 | DN200 PN10 | 310 | 600 | 430 | | | | | | | | |
| 250 | 269-289 | 3.0 | 10.0 | DN200 PN10 | 310 | 600 | 430 | | | | | | | | |
| 250 | 273-293 | 3.0 | 10.0 | DN200 PN10 | 310 | 600 | 430 | | | | | | | | |
| 250 | 282-302 | 3.0 | 10.0 | DN200 PN10 | 310 | 600 | 430 | | | | | | | | |

Every effort has been made to ensure that the information contained in this publication is accurate at the time of publishing. Crane Ltd assumes no responsibility or liability for typographical errors or omissions or for any misinterpretation of the information within the publication and reserves the right to change without notice.

When using HandiRange products on PE pipe, consideration to clamp length must be given, please contact the Viking Johnson Marketing Department for more details.

DR11623_01_10_2024_(ISSUE-8)_GB

Technical Information

Pressure Rating

- ▶ Water = In accordance the rating as defined in the tables.
- ▶ Gas = In accordance the rating as defined in the tables.

Vacuum Pressure

Capable of accommodating a vacuum pressure of -0.7 bar.

Site Test Pressure

1.5 times working pressure for short duration (2 hours).

Angularity

HandiTee fittings are not able to accommodate any angularity.

Bolt Torque/Spanner

M16; Torque = 95-120Nm on every bolt

Temperature Rating of Product

- ▶ EPDM = -20°C to +40°C
- ▶ Nitrile = 20°C to +40°C

Note: HandiTee is not suitable for use on heating systems with fluctuating temperatures

End Load Due to Internal Pressure

HandiTee fittings DO NOT resist end load due to the internal pressure - adequate external restraint must be provided to prevent pipe pull out from the clamp.

Loads from Drilling Equipment and Valve / Branch Pipework

HandiTee is not designed to accommodate / resist the loads from the under pressure drilling equipment, which needs to be supported externally during the operation to drill into the main. In addition, the valve and branch pipework needs to be adequately supported to ensure none of the dead / live loads are imposed in the branch outlet in the HandiTee.

Approvals

The following water contact materials used in HandiTee are approved for use with potable water:-

- ▶ EPDM Gaskets; WRAS

Materials & Relevant Standards

Body & Plates

Shell, channel plate, bridging plate, lug plate & nut plate
Stainless Steel AISI 304 (A2)

Gasket

EPDM as standard, Nitrile option

Flange Outlets

Stainless Steel AISI 304, flanges according to DIN2576
varying from DN50 up to DN300

Bolts

Stainless Steel AISI 304 (A2); M16
(metric thread according DIN267),
thread is PTFE coated to prevent galling

Nuts

Stainless Steel AISI 304 (A2). M16 according DIN934

Washers

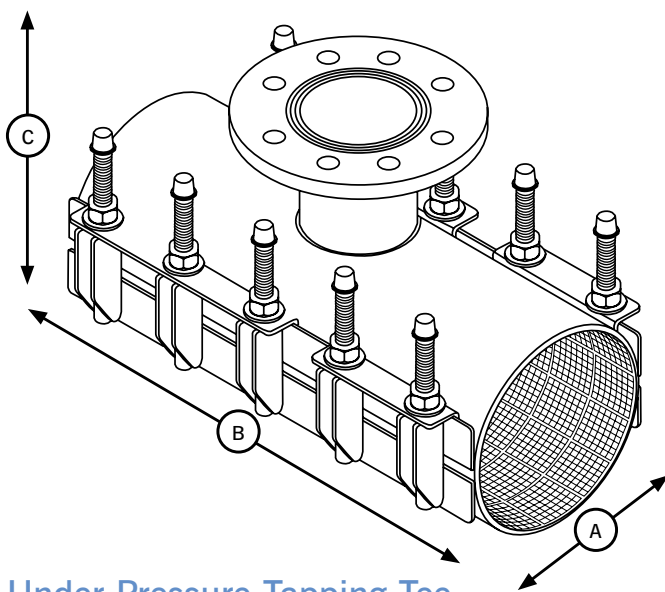
Stainless Steel BS1449:PART 2 GRADE 304S15

Every effort has been made to ensure that the information contained in this publication is accurate at the time of publishing. Crane Ltd assumes no responsibility or liability for typographical errors or omissions or for any misinterpretation of the information within the publication and reserves the right to change without notice.

When using HandiRange products on PE pipe, consideration to clamp length must be given, please contact the Viking Johnson Marketing Department for more details.

HandiTee DN300 to DN750 Clamp Length 300 to 500mm

HandiTee



HandiTee Under Pressure Tapping Tee

| DN (mm) | OD Range (mm) | Working Pressure | | Length of Clamp (mm) | | | | | | | | | | | |
|---------|---------------|------------------|------|----------------------|-------------|----------------------------------|--------|---------------|--------|----------------------------------|--------|------------|--------|----------------------------------|--------|
| | | | | 300 | | | 400 | | | 500 | | | | | |
| | | | | Gas (bar) | Water (bar) | Max Flange Nom & Flange Drilling | A (mm) | B (mm) | C (mm) | Max Flange Nom & Flange Drilling | A (mm) | B (mm) | C (mm) | Max Flange Nom & Flange Drilling | A (mm) |
| 300 | 295-315 | 3.0 | 10.0 | DN65 PN10/16 | 360 | 300 | 480 | DN150 PN10/16 | 360 | 400 | 480 | DN200 PN10 | 360 | 500 | 480 |
| 300 | 314-334 | 3.0 | 10.0 | DN65 PN10/16 | 360 | 300 | 480 | DN150 PN10/16 | 360 | 400 | 480 | DN200 PN10 | 360 | 500 | 480 |
| 300 | 322-344 | 3.0 | 10.0 | DN65 PN10/16 | 360 | 300 | 480 | DN150 PN10/16 | 360 | 400 | 480 | DN200 PN10 | 360 | 500 | 480 |
| 300 | 335-355 | 3.0 | 10.0 | DN65 PN10/16 | 360 | 300 | 480 | DN150 PN10/16 | 360 | 400 | 480 | DN200 PN10 | 360 | 500 | 480 |
| 300 | 347-367 | 3.0 | 10.0 | | | | | DN150 PN10/16 | 360 | 400 | 480 | DN200 PN10 | 360 | 500 | 480 |
| 350 | 350-368 | 3.0 | 10.0 | | | | | DN150 PN10/16 | 410 | 400 | 530 | DN200 PN10 | 410 | 500 | 530 |
| 350 | 360-380 | 3.0 | 10.0 | | | | | DN150 PN10/16 | 410 | 400 | 530 | DN200 PN10 | 410 | 500 | 530 |
| 350 | 365-385 | 3.0 | 10.0 | | | | | DN150 PN10/16 | 410 | 400 | 530 | DN200 PN10 | 410 | 500 | 530 |
| 350 | 382-402 | 3.0 | 10.0 | | | | | DN150 PN10/16 | 410 | 400 | 530 | DN200 PN10 | 410 | 500 | 530 |
| 350 | 396-420 | 3.0 | 10.0 | | | | | DN150 PN10/16 | 410 | 400 | 530 | DN200 PN10 | 410 | 500 | 530 |
| 400 | 404-424 | 3.0 | 10.0 | | | | | DN150 PN10/16 | 460 | 400 | 580 | DN200 PN10 | 460 | 500 | 580 |
| 400 | 410-430 | 3.0 | 10.0 | | | | | DN150 PN10/16 | 460 | 400 | 580 | DN200 PN10 | 460 | 500 | 580 |
| 400 | 420-440 | 2.0 | 6.0 | | | | | | | | | DN200 PN10 | 460 | 500 | 580 |
| 450 | 435-455 | 2.0 | 6.0 | | | | | | | | | DN200 PN10 | 510 | 500 | 630 |
| 450 | 468-488 | 2.0 | 6.0 | | | | | | | | | DN200 PN10 | 510 | 500 | 630 |
| 450 | 485-505 | 2.0 | 6.0 | | | | | | | | | DN200 PN10 | 510 | 500 | 630 |
| 500 | 532-552 | 2.0 | 6.0 | | | | | | | | | DN200 PN10 | 560 | 500 | 680 |
| 500 | 545-575 | 2.0 | 6.0 | | | | | | | | | DN200 PN10 | 560 | 500 | 680 |
| 500 | 568-498 | 2.0 | 6.0 | | | | | | | | | DN200 PN10 | 560 | 500 | 680 |
| 600 | 588-618 | 2.0 | 6.0 | | | | | | | | | DN200 PN10 | 660 | 500 | 780 |
| 600 | 608-638 | 2.0 | 6.0 | | | | | | | | | | | | |
| 600 | 628-658 | 2.0 | 6.0 | | | | | | | | | | | | |
| 600 | 648-678 | 2.0 | 6.0 | | | | | | | | | | | | |
| 600 | 668-698 | 2.0 | 6.0 | | | | | | | | | | | | |
| 600 | 688-718 | 2.0 | 6.0 | | | | | | | | | | | | |
| 700 | 708-738 | 2.0 | 6.0 | | | | | | | | | | | | |
| 700 | 728-758 | 2.0 | 6.0 | | | | | | | | | | | | |
| 750 | 748-778 | 2.0 | 6.0 | | | | | | | | | | | | |
| 750 | 768-798 | 2.0 | 6.0 | | | | | | | | | | | | |

Every effort has been made to ensure that the information contained in this publication is accurate at the time of publishing. Crane Ltd assumes no responsibility or liability for typographical errors or omissions or for any misinterpretation of the information within the publication and reserves the right to change without notice.

When using HandiRange products on PE pipe, consideration to clamp length must be given, please contact the Viking Johnson Marketing Department for more details.

DR11623_01_10_2024_(ISSUE-8)_GB

Technical Information

Pressure Rating

- ▶ Water = In accordance the rating as defined in the tables.
- ▶ Gas = In accordance the rating as defined in the tables.

Vacuum Pressure

Capable of accommodating a vacuum pressure of -0.7 bar.

Site Test Pressure

1.5 times working pressure for short duration (2 hours).

Angularity

HandiTee fittings are not able to accommodate any angularity.

Bolt Torque/Spanner

M16; Torque = 95-120Nm on every bolt

Temperature Rating of Product

- ▶ EPDM = -20°C to +40°C
- ▶ Nitrile = 20°C to +40°C

Note: HandiTee is not suitable for use on heating systems with fluctuating temperatures

End Load Due to Internal Pressure

HandiTee fittings DO NOT resist end load due to the internal pressure - adequate external restraint must be provided to prevent pipe pull out from the clamp.

Loads from Drilling Equipment and Valve / Branch Pipework

HandiTee is not designed to accommodate / resist the loads from the under pressure drilling equipment, which needs to be supported externally during the operation to drill into the main. In addition, the valve and branch pipework needs to be adequately supported to ensure none of the dead / live loads are imposed in the branch outlet in the HandiTee.

Approvals

The following water contact materials used in HandiTee are approved for use with potable water:-

- ▶ EPDM Gaskets; WRAS

Materials & Relevant Standards

Body & Plates

Shell, channel plate, bridging plate, lug plate & nut plate
Stainless Steel AISI 304 (A2)

Gasket

EPDM as standard, Nitrile option

Flange Outlets

Stainless Steel AISI 304, flanges according to DIN2576
varying from DN50 up to DN300

Bolts

Stainless Steel AISI 304 (A2); M16
(metric thread according DIN267),
thread is PTFE coated to prevent galling

Nuts

Stainless Steel AISI 304 (A2). M16 according DIN934

Washers

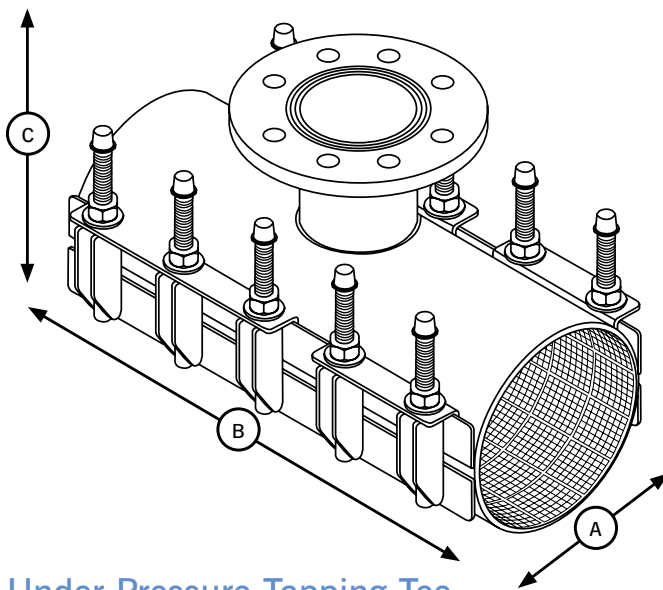
Stainless Steel BS1449:PART 2 GRADE 304S15

Every effort has been made to ensure that the information contained in this publication is accurate at the time of publishing. Crane Ltd assumes no responsibility or liability for typographical errors or omissions or for any misinterpretation of the information within the publication and reserves the right to change without notice.

When using HandiRange products on PE pipe, consideration to clamp length must be given, please contact the Viking Johnson Marketing Department for more details.

HandiTee DN300 to DN750 Clamp Length 600 to 1000mm

HandiTee



HandiTee Under Pressure Tapping Tee

| DN (mm) | OD Range (mm) | Working Pressure | | Length of Clamp (mm) | | | | | | | | | | | | |
|---------|---------------|------------------|------|----------------------|-------------|----------------------------------|--------|------------|--------|----------------------------------|--------|------------|--------|----------------------------------|--------|--------|
| | | | | 600 | | | 800 | | | 1000 | | | | | | |
| | | | | Gas (bar) | Water (bar) | Max Flange Nom & Flange Drilling | A (mm) | B (mm) | C (mm) | Max Flange Nom & Flange Drilling | A (mm) | B (mm) | C (mm) | Max Flange Nom & Flange Drilling | A (mm) | B (mm) |
| 300 | 295-315 | 3.0 | 10.0 | DN200 PN10 | 360 | 600 | 480 | | | | | | | | | |
| 300 | 314-334 | 3.0 | 10.0 | DN250 PN10 | 360 | 600 | 480 | | | | | | | | | |
| 300 | 322-344 | 3.0 | 10.0 | DN250 PN10 | 360 | 600 | 480 | | | | | | | | | |
| 300 | 335-355 | 3.0 | 10.0 | DN250 PN10 | 360 | 600 | 480 | | | | | | | | | |
| 300 | 347-367 | 3.0 | 10.0 | DN250 PN10 | 360 | 600 | 480 | | | | | | | | | |
| 350 | 350-368 | 3.0 | 10.0 | DN250 PN10 | 410 | 600 | 530 | | | | | | | | | |
| 350 | 360-380 | 3.0 | 10.0 | DN250 PN10 | 410 | 600 | 530 | | | | | | | | | |
| 350 | 365-385 | 3.0 | 10.0 | DN250 PN10 | 410 | 600 | 530 | DN300 PN10 | 410 | 800 | 530 | DN300 PN10 | 410 | 1000 | 530 | |
| 350 | 382-402 | 3.0 | 10.0 | DN250 PN10 | 410 | 600 | 530 | DN300 PN10 | 410 | 800 | 530 | DN300 PN10 | 410 | 1000 | 530 | |
| 350 | 396-420 | 3.0 | 10.0 | DN250 PN10 | 410 | 600 | 530 | DN300 PN10 | 410 | 800 | 530 | DN300 PN10 | 410 | 1000 | 530 | |
| 400 | 404-424 | 3.0 | 10.0 | DN250 PN10 | 460 | 600 | 580 | DN300 PN10 | 460 | 800 | 580 | DN300 PN10 | 460 | 1000 | 580 | |
| 400 | 410-430 | 3.0 | 10.0 | DN250 PN10 | 460 | 600 | 580 | DN300 PN10 | 460 | 800 | 580 | DN300 PN10 | 460 | 1000 | 580 | |
| 400 | 420-440 | 2.0 | 6.0 | DN250 PN10 | 460 | 600 | 580 | DN300 PN10 | 460 | 800 | 580 | DN300 PN10 | 460 | 1000 | 580 | |
| 450 | 435-455 | 2.0 | 6.0 | DN250 PN10 | 510 | 600 | 630 | DN300 PN10 | 510 | 800 | 630 | DN300 PN10 | 510 | 1000 | 630 | |
| 450 | 468-488 | 2.0 | 6.0 | DN250 PN10 | 510 | 600 | 630 | DN300 PN10 | 510 | 800 | 630 | DN300 PN10 | 510 | 1000 | 630 | |
| 450 | 485-505 | 2.0 | 6.0 | DN250 PN10 | 510 | 600 | 630 | DN300 PN10 | 510 | 800 | 630 | DN300 PN10 | 510 | 1000 | 630 | |
| 500 | 532-552 | 2.0 | 6.0 | DN250 PN10 | 560 | 600 | 680 | DN300 PN10 | 560 | 800 | 680 | DN300 PN10 | 560 | 1000 | 680 | |
| 500 | 545-575 | 2.0 | 6.0 | DN250 PN10 | 560 | 600 | 680 | DN300 PN10 | 560 | 800 | 680 | DN300 PN10 | 560 | 1000 | 680 | |
| 500 | 568-498 | 2.0 | 6.0 | DN250 PN10 | 560 | 600 | 680 | DN300 PN10 | 560 | 800 | 680 | DN300 PN10 | 560 | 1000 | 680 | |
| 600 | 588-618 | 2.0 | 6.0 | DN250 PN10 | 660 | 600 | 780 | DN300 PN10 | 660 | 800 | 780 | DN300 PN10 | 660 | 1000 | 780 | |
| 600 | 608-638 | 2.0 | 6.0 | DN250 PN10 | 660 | 600 | 780 | DN300 PN10 | 660 | 800 | 780 | DN300 PN10 | 660 | 1000 | 780 | |
| 600 | 628-658 | 2.0 | 6.0 | DN250 PN10 | 660 | 600 | 780 | DN300 PN10 | 660 | 800 | 780 | DN300 PN10 | 660 | 1000 | 780 | |
| 600 | 648-678 | 2.0 | 6.0 | DN250 PN10 | 660 | 600 | 780 | DN300 PN10 | 660 | 800 | 780 | DN300 PN10 | 660 | 1000 | 780 | |
| 600 | 668-698 | 2.0 | 6.0 | DN250 PN10 | 660 | 600 | 780 | DN300 PN10 | 660 | 800 | 780 | DN300 PN10 | 660 | 1000 | 780 | |
| 600 | 688-718 | 2.0 | 6.0 | DN250 PN10 | 660 | 600 | 780 | DN300 PN10 | 660 | 800 | 780 | DN300 PN10 | 660 | 1000 | 780 | |
| 700 | 708-738 | 2.0 | 6.0 | DN250 PN10 | 760 | 600 | 880 | DN300 PN10 | 760 | 800 | 880 | DN300 PN10 | 760 | 1000 | 880 | |
| 700 | 728-758 | 2.0 | 6.0 | DN250 PN10 | 760 | 600 | 880 | DN300 PN10 | 760 | 800 | 880 | DN300 PN10 | 760 | 1000 | 880 | |
| 750 | 748-778 | 2.0 | 6.0 | DN250 PN10 | 810 | 600 | 930 | DN300 PN10 | 810 | 800 | 930 | DN300 PN10 | 810 | 1000 | 930 | |
| 750 | 768-798 | 2.0 | 6.0 | DN250 PN10 | 810 | 600 | 930 | DN300 PN10 | 810 | 800 | 930 | DN300 PN10 | 810 | 1000 | 930 | |

Every effort has been made to ensure that the information contained in this publication is accurate at the time of publishing. Crane Ltd assumes no responsibility or liability for typographical errors or omissions or for any misinterpretation of the information within the publication and reserves the right to change without notice.

When using HandiRange products on PE pipe, consideration to clamp length must be given, please contact the Viking Johnson Marketing Department for more details.

Technical Information

Pressure Rating

- ▶ Water = In accordance the rating as defined in the tables.
- ▶ Gas = In accordance the rating as defined in the tables.

Vacuum Pressure

Capable of accommodating a vacuum pressure of -0.7 bar.

Site Test Pressure

1.5 times working pressure for short duration (2 hours).

Angularity

HandiTee fittings are not able to accommodate any angularity.

Bolt Torque/Spanner

M16; Torque = 95-120Nm on every bolt

Temperature Rating of Product

- ▶ EPDM = -20°C to +40°C
- ▶ Nitrile = 20°C to +40°C

Note: HandiTee is not suitable for use on heating systems with fluctuating temperatures

End Load Due to Internal Pressure

HandiTee fittings DO NOT resist end load due to the internal pressure - adequate external restraint must be provided to prevent pipe pull out from the clamp.

Loads from Drilling Equipment and Valve / Branch Pipework

HandiTee is not designed to accommodate / resist the loads from the under pressure drilling equipment, which needs to be supported externally during the operation to drill into the main. In addition, the valve and branch pipework needs to be adequately supported to ensure none of the dead / live loads are imposed in the branch outlet in the HandiTee.

Approvals

The following water contact materials used in HandiTee are approved for use with potable water:-

- ▶ EPDM Gaskets; WRAS

Materials & Relevant Standards

Body & Plates

Shell, channel plate, bridging plate, lug plate & nut plate
Stainless Steel AISI 304 (A2)

Gasket

EPDM as standard, Nitrile option

Flange Outlets

Stainless Steel AISI 304, flanges according to DIN2576
varying from DN50 up to DN300

Bolts

Stainless Steel AISI 304 (A2); M16
(metric thread according DIN267),
thread is PTFE coated to prevent galling

Nuts

Stainless Steel AISI 304 (A2). M16 according DIN934

Washers

Stainless Steel BS1449:PART 2 GRADE 304S15

Every effort has been made to ensure that the information contained in this publication is accurate at the time of publishing. Crane Ltd assumes no responsibility or liability for typographical errors or omissions or for any misinterpretation of the information within the publication and reserves the right to change without notice.

When using HandiRange products on PE pipe, consideration to clamp length must be given, please contact the Viking Johnson Marketing Department for more details.

Distributor stamp

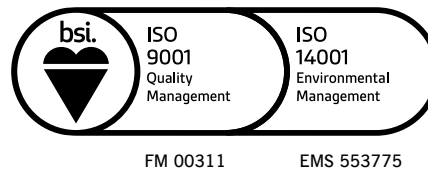


PIONEERS IN PIPE SOLUTIONS

46-48 WILBURY WAY
HITCHIN, HERTFORDSHIRE
SG4 0UD. UNITED KINGDOM
TELEPHONE: +44 (0)1462 443322
FAX: +44 (0)1462 443311
EMAIL: info@vikingjohnson.com

www.vikingjohnson.com

DUBAI SALES OFFICE
CRANE BS&U
BUILDING 4, OFFICE 901
THE GALLERIES
PO BOX 17415
DOWNTOWN JEBEL ALI
DUBAI. UAE
TELEPHONE: +971 4816 5800



To visit our Video Library go to:
www.youtube.com/user/CraneBSU

- Designed and manufactured under quality management systems in accordance with BS EN ISO 9001.
- Environmental Management System accredited to ISO 14001.
- For full terms and conditions, please visit our website.

Every effort has been made to ensure that the information contained in this publication is accurate at the time of publishing. Crane Ltd assumes no responsibility or liability for typographical errors or omissions or for any misinterpretation of the information within the publication and reserves the right to change without notice.

All images used in this marketing literature are the exclusive property of Crane Ltd and copyrighted. These images may not be reproduced, copied, transmitted or manipulated without written permission.